



# Spare Parts Catalog

9 S 75

Material number: 1308.050.186



Pos.	Information	Amendment number
001	Use case -----	
002	Customer Otosan Otomobil Sanayl A.S.	
003	City Kadikoev Istanbul	
004	DUNS	
005	Vehicle / Apparatus -----	
006	Sales Name CARGO2524S	
007	Manufacturer Otosan Otomobil Sanayl A.S.	
008	Engineering Name	
009	Product Use TRUCK	
010	Vehicle/Hardware Type ROAD TRACTOR	
011	SOP	
012	Engine	
013	Sales Designation	
014	Manufacturer FORD	
015	Eng.Displ.	
016	Cylinder	
017	Nom. power 176 kW	
018	RPM at nom. power 2500 1/min	
019	Nom. torque 840 Nm	
020	RPM at nom. torque 1200 1/min	
021	Classification use case -----	
022	DESIGNATION, CLUTCH 395	
023	MANUFACTURER, CLUTCH VALEO	
024	TOTAL NUMBER OF GEARS 6	
025	NUMBER OF DRIVING GEARS 2	
026	DYNAMIC TYRE RADIUS 526 mm	
027	REAR AXLE RATIO 4,56	
031	PERMISS.GROSS VEHICLE WEIGHT 26 t	
032	PERMISS.GROSS COMBIN.WEIGHT 40 t	
033	Product description -----	



Pos.	Information	Amendment number
034	INSTALLATION POS TRANSMISSION VERTICAL	
035	TRANSMISSION ATTACHMENT FLANGE-MOUNTED	
036	RATIO, BOTTOM GEAR 13,16	
037	RATIO, TOP GEAR 1	
038	SET OF RATIOS DG	
039	RATIO, 1ST GEAR 13,16	
040	RATIO, 2ND GEAR 8,91	
041	RATIO, 3RD GEAR 6,5	
042	RATIO, 4TH GEAR 4,67	
043	RATIO, 5TH GEAR 3,5	
044	RATIO, 6TH GEAR 2,55	
045	RATIO, 7TH GEAR 1,86	
046	RATIO, 8TH GEAR 1,33	
047	RATIO, 1ST GEAR REVERSE 11,74	
048	RATIO, 9TH GEAR 1	
049	UEBERSETZUNG PLANETENSATZ 3,5	
050	NUMBER OF PLANETARY GEARS 5	
052	DESIGN, SHIFT SYSTEM TURNING SHAFT	
053	POSITION, GEAR SHIFT SYSTEM HORIZONTAL RIGHT	
054	DESIGN, SHIFT PATTERN H-H	
056	AUSFUEHRUNG ROHR GP PLASTIC PIPING	
061	DESIGN, SEPARATING CLUTCH FULL-SYNCHRONIZED	
062	REFERENCE LENGTH INPUT SHAFT 305 mm	
063	STANDARD TYPE INPUT SHAFT SAE	
064	NUMBER OF WEDGES INPUT SHAFT 10	
065	VERSION OF INPUT SHAFT FORM C	
066	DIAMETER, JOURNAL, INPUT SHAFT 25 mm	
067	NOMINAL DIAMETER INPUT SHAFT 1,75 in	
068	TYPE FIT SPIGOTS INPUT SHAFT F7	
069	DIAMETER SHAFT OF INPUT SHAFT 44 mm	



Pos.	Information	Amendment number
070	BUSH VARIANT INPUT SHAFT WITHOUT GROOVE	
074	DIAMETER, RELEASE FLANGE 57 mm	
075	DICHTKAPPE AUSRUECKLAGERFL n	
076	TYPE FIT RELEASE BEARING FLA. E8	
077	DESIGN BEARING OUTPUT STANDARD SUSPENSION	
078	OUTER DIA. OUTPUT FLANGE RA 180 mm	
080	NO.OF BORES OUTPUT FLANGE HA1 4	
081	BORE DIA. OUTPUT FLANGE RA 15 mm	
084	REF. LENGTH OUTPUT FLANGE RA 84 mm	
088	DIMENSION SHIFT TURRET DIST. 190 mm	
089	MEAS. LOC. SHIFT TURRET DIST. SHIFT LEVER-LOCATION	
113	SPRING ARRANGEMENT Q11	
114	TOOLING SET OF SPRINGS W022	
115	SPRING FORCE DETENT PLUNGER RG 88 N	
117	SPRING FORCE,GEAR DETENT NG+GG 275 N	
121	NORMENART HOHLFLANSCH HEXAGON SCREW	
122	SELECTION PATTERN VARIANT GEAR SHIFT PATTERN 1	
132	SWITCH, REVERSE GEAR y	
133	DESIGN, RG (REV.GEAR) SWITCH CLOSING	
134	NOTE ON SWITCH, REVERSE GEAR GEAR SHIFT RAIL	
135	PROT. CAP SWITCH, REVERSE GEAR y	
136	DESIGN, CONNECTION, RG SWITCH DIN BAYONET	
138	SWITCH, NEUTRAL GEAR y	
139	DESIGN,NG(NEUTRAL GEAR)SWITCH OPENING SWITCH	
140	PROT.CAP SWITCH, NEUTRAL GEAR y	
141	DESIGN, CONNECTION, NG SWITCH DIN BAYONET	
145	REF.LENGTH,RELEASE BEAR.FLAN 190 mm	
147	FUNKTION GP-SCHALTER GP	
148	DESIGN, GP SWITCH WITHOUT GROOVE	
149	PROTECTING CAP GP SWITCH n	



Pos.	Information	Amendment number
158	ATTACHED AGRREGATES 1 WITHOUT WSK	
159	VER. TRANSMISSION VENTILATION BREATHER	
162	ATTACHMENT VARIANT, RETARDER WITHOUT GROOVE	
183	DESIGN PULSE SENSOR INPUT WITHOUT GROOVE	
184	PROT.CAP PULSE SENSOR INPUT n	
188	NO PULSES PULSE SENSOR TM H70 6 IMP/U	
189	VER. PULSE SENSOR TRANSM. H70 WITH	
190	PROT. CAP PULSE SENSOR TM H70 y	
191	ASSEMBLY POS PULSE SENSOR H70 1	
192	NOTE ASS. POS PULSE SENSOR H70 INSTALLATION DRAWING	
193	VER. CONNECT. PULSE SENSOR H70 DIN BAYONET	
197	HINWEIS ZU OELBEFUELLUNG FILL IN OVERFLOW	
198	POSITION, OIL FILLER HOUSING, LH SIDE	
199	OIL CAPACITY, GEARBOX 9,5 dm3	
202	OIL GRADE PERMISSIBLE ACC. TO TE-ML02	
204	COLOR NOT	
207	CODING OUTER CONSERVATION KA1	
208	SCOPE OUTER CONSERVATION T	
209	CODING INNER CONSERVATION KI1	
210	CONSERVATION SPECIFICATION ZFN 916	
211	Documents -----	
212	GEARBOX Drawing 1308.050.003	
213	SET OF SPRINGS Drawing 1308.149.020	
214	GEARSHIFT SYST. Drawing 1308.172.020	
215	9-GANG-GETRIEBE Drawing 1308.600.008	
216	Alias ID -----	
217	Otosan Otomobil Sanayl A.S. 3C467001B2B	



Graphics	Pos.	Material number	Name	VKF	Amend. no.	Amend. start	Prod. no.	Material feature / tech. info.	ID
064.01.03-1	110	1308.101.111	GEARBOX HOUSING	1		00.00.0000		ST *GEH II	3
064.01.03-1	116	1308.101.066	HOUSING	1		00.00.0000		GEH.1*DG*ST*UEBERLAUF LI	3
064.01.03-1	120	1308.101.830	GEARBOX HOUSING	1		00.00.0000		GEH.1*ST*ANBAUTEILE	3
064.02.03-1	140	1308.102.434	CONNPLATE	1		00.00.0000		L=190*D=57E8*AUSF.A	3
064.02.03-1	150	1308.102.806	INPUT SHAFT	1		00.00.0000			3
064.02.03-1	910	1308.102.043	INPUT SHAFT	1		00.00.0000		13,16*L=305*SAE10C 1 3/4	3
064.03.01-1	180	1308.103.804	LAYSHAFT	1		00.00.0000			3
064.03.01-1	920	1308.103.004	LAYSHAFT	1		00.00.0000		13,16-1,00	3
064.04.01-1	190	1308.104.801	MAIN SHAFT	1		00.00.0000			3
064.04.01-1	930	1308.104.010	MAIN SHAFT	1		00.00.0000		13,16-1,00	3
064.05.02-1	220	1308.105.008	RETURN	1		00.00.0000			3
064.06.10-1	230	1308.106.108	GEAR SHIFT SYSTEM	1		00.00.0000		W I*H-H*DG	3
064.06.10-1	236	1308.106.452	CONNECTING PARTS	1		00.00.0000		RG-SCHL*NG-OEFF*BAJONETT	3
064.07.14-1	20	1308.107.467	GEAR SHIFT SHAFT	1		00.00.0000		6KT.SCHRAUBEN *LP	3
064.07.14-1	282	1308.107.818	GEAR SHIFT HOUSING	1		00.00.0000		O.ABSTUETZPUNKT	3
064.07.14-1	910	1308.107.035	GEAR SHIFT HOUSING	1		00.00.0000		W I*H-H*WR*ST * 88N*NG+GG=275N	3
064.07.14-1	914	1308.107.464	GEAR SHIFT SHAFT	1		00.00.0000		W I*H-H*WR *L=190 *MIT STOPFEN	3
064.08.02-1	926	1308.170.009	SHIFT TURRET	1		00.00.0000		L=190	3
064.08.02-1	934	1308.170.803	COVER	1		00.00.0000		L=190	3
064.12.09-1	922	1308.149.034	SET OF SPRINGS	1		00.00.0000		H-H *Q11 *W022	3
064.43.03-1	10	1308.131.014	GP HOUSING	1		00.00.0000		ST*GD-AL *ZUS.AUFHAENGEAUGEN	3
064.43.03-1	30	1308.131.400	CLOSING COMPONENTS	1		00.00.0000		NA-OEFFNUNG	3
064.43.03-1	512	1308.131.801	GP HOUSING	1		00.00.0000			3
064.44.01-1	40	1308.132.003	PLANETARY DRIVE	1		00.00.0000			3
064.44.01-1	50	1308.132.418	PLANETARY DRIVE	1		00.00.0000		AD=180*LZ=4*D=15,0	3
064.44.01-1	60	1308.132.801	PLANETARY DRIVE	1		00.00.0000			3
064.45.01-1	70	1308.133.002	SYNCHRONIZER	1		00.00.0000			3
064.45.01-1	80	1308.133.400	SYNCHRONIZER	1		00.00.0000		SYN.RING SINTER	3
064.46.03-1	90	1308.134.008	GP SHIFT SYSTEM	1		00.00.0000		ANSCHLAG GEDAEMPFT	3
064.46.03-1	554	1308.134.403	CONNECTING PARTS	1		00.00.0000		GP-ANZ*OHNE	3
064.47.01-1	190	1308.135.011	SPEEDOMETER COVER	1		00.00.0000		E/Z 6*GEBER*BAJONETT	3
064.47.01-1	194	1308.135.804	SPEEDOMETER COVER	1		00.00.0000		E/Z6	3

VKF Incidence factor

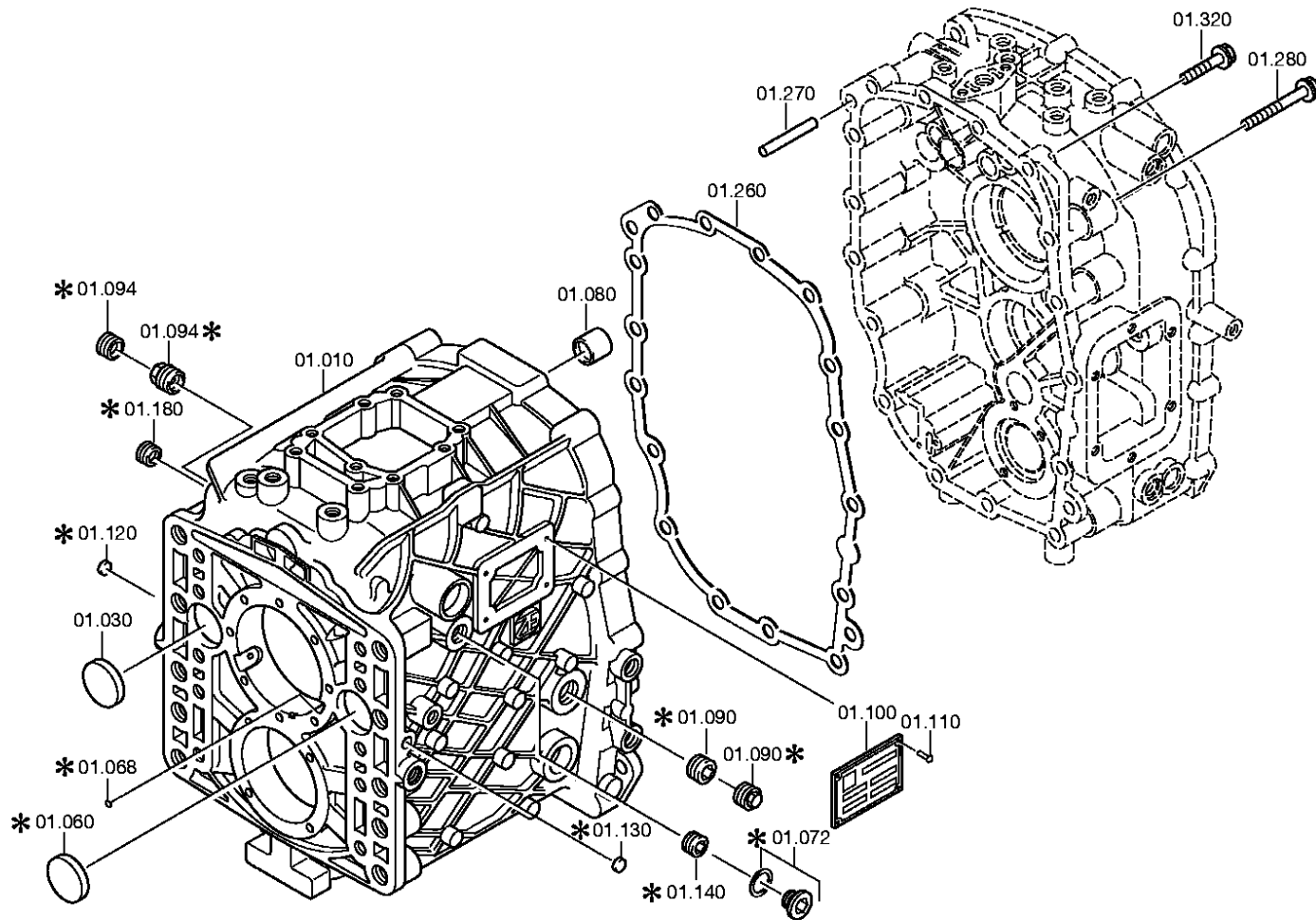
ID Identification (output code)



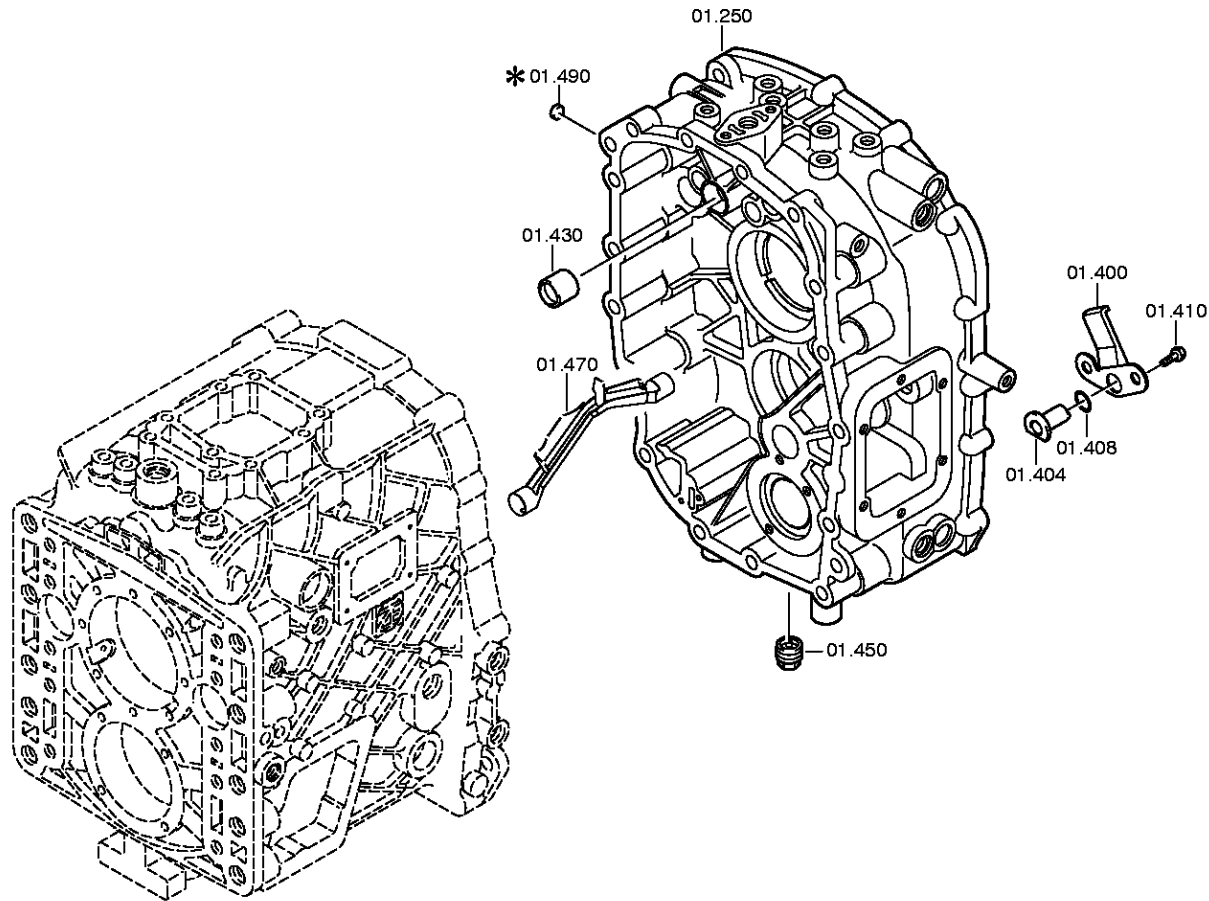
Graphics	Pos.	Material number	Name	VKF	Amend. no.	Amend. start	Prod. no.	Material feature / tech. info.	ID
064.57.02-1	390	1308.145.002	RANGE SELECTION	1		00.00.0000		9S75*WA*SE*H-H*W 1	3

**VKF** Incidence factor

**ID** Identification (output code)









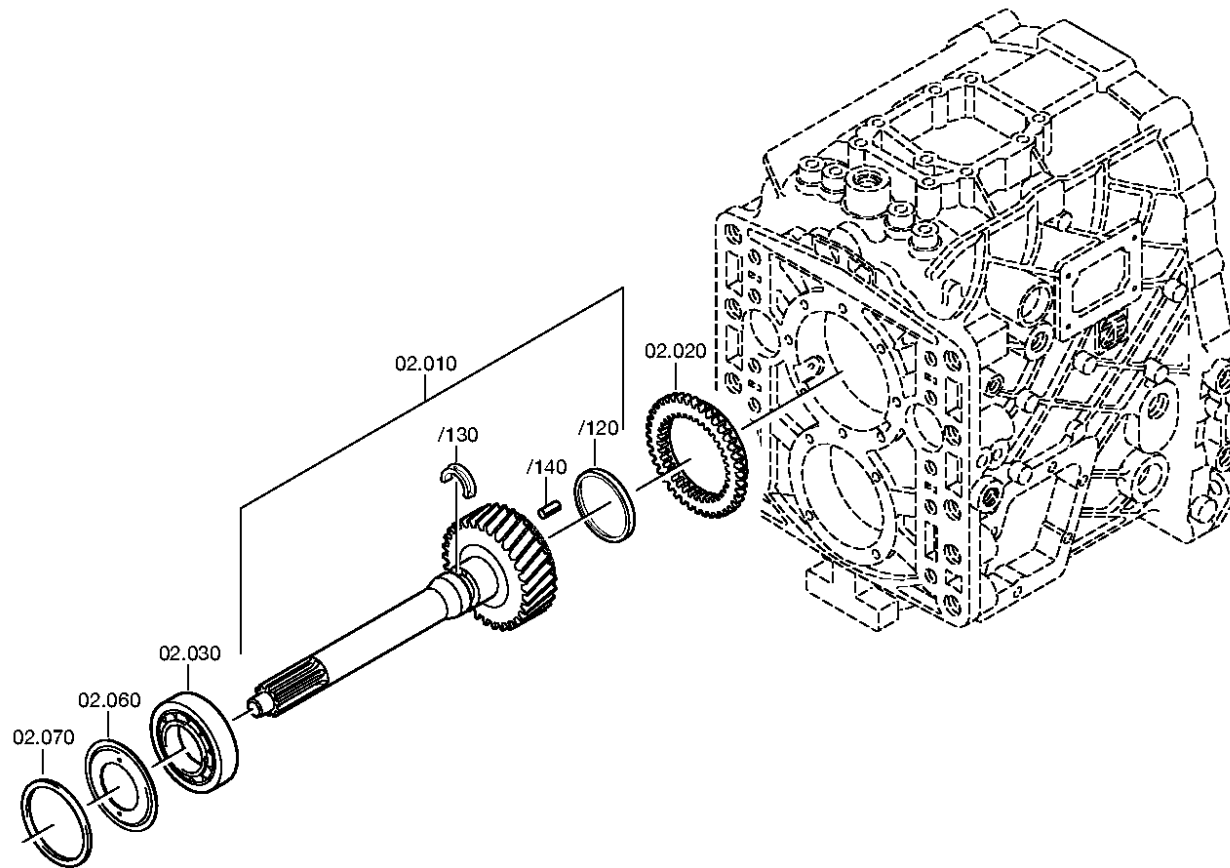
Pos.	Material number	Name	VKF	Amend. no.	Amend. start	Prod. no.	Material feature / tech. info.	OTK	External material no.	ID	Weight	SP
10	1308.201.105	HOUSING	1		00.00.0000		KPL.			3	0,000	
30	0750.112.185	PROTECTION CAP	1		00.00.0000		WTB 40X7			3	0,000	
80	0750.115.238	BALL SLEEVE	1		00.00.0000		WTB 18,0X24,0X24,0			3	0,000	
90	---	SCREW PLUG	1		00.00.0000		M24X1,5 * 50N.M*O. DICHTRG.			3	0,000	
---	0736.303.005	SCREW PLUG	1		00.00.0000					5	0,000	
94	---	SCREW PLUG	1		00.00.0000		M24X1,5 * 50N.M*O. DICHTRG.			3	0,000	
---	0736.301.022	SCREW PLUG	1		00.00.0000		M24X1,5 IN 0736 301 020(2)			5	0,000	
100	---	TYPE PLATE	1		00.00.0000		WTB *BOUTHEON			3	0,000	
---	0730.365.241	TYPE PLATE	1	C0100105 6E10	00.00.0000	00.00.0000	EINHEITSSCH. VERDREHSICHER			5	0,000	
---	0730.365.246	TYPE PLATE	1	C0100469 9E10	00.00.0000	00.00.0000	EINHEITSSCH. VERDREHSICHER			5	0,000	
110	0731.101.049	BLIND RIVET	4	C0100417 6F10	00.00.0000	00.00.0000				5	0,000	
250	1308.201.115	HOUSING	1		00.00.0000					3	0,000	
260	0501.324.719	GASKET	1		00.00.0000					5	0,000	
270	0731.201.620	CYLINDRICAL PIN	2		00.00.0000					5	0,000	
280	0636.010.774	HEXAGON BOLT	10		00.00.0000		M8X70			5	0,000	
320	0636.010.772	HEXAGON BOLT	6		00.00.0000		M8X45			5	0,000	
400	1308.201.025	OIL TUBE	1		00.00.0000		KPL.			3	0,000	
404	1308.301.071	PIPE	1		00.00.0000					5	0,000	
408	0634.314.253	O-RING	1		00.00.0000		10X3			5	0,000	
410	0636.015.294	HEXAGON BOLT	2		00.00.0000		M6X12			5	0,005	
430	0750.115.238	BALL SLEEVE	1		00.00.0000		WTB 18,0X24,0X24,0			3	0,000	
450	---	SCREW PLUG	1		00.00.0000		M24X1,5 * 50N.M*O. DICHTRG.			3	0,000	
---	0736.305.016	SCREW PLUG	1		00.00.0000		M24X1,5 MAGNET			5	0,000	
470	1308.201.032	OIL COLLECTING PLATE	1		00.00.0000		KPL. IN 1308 201 022(0)			3	0,000	

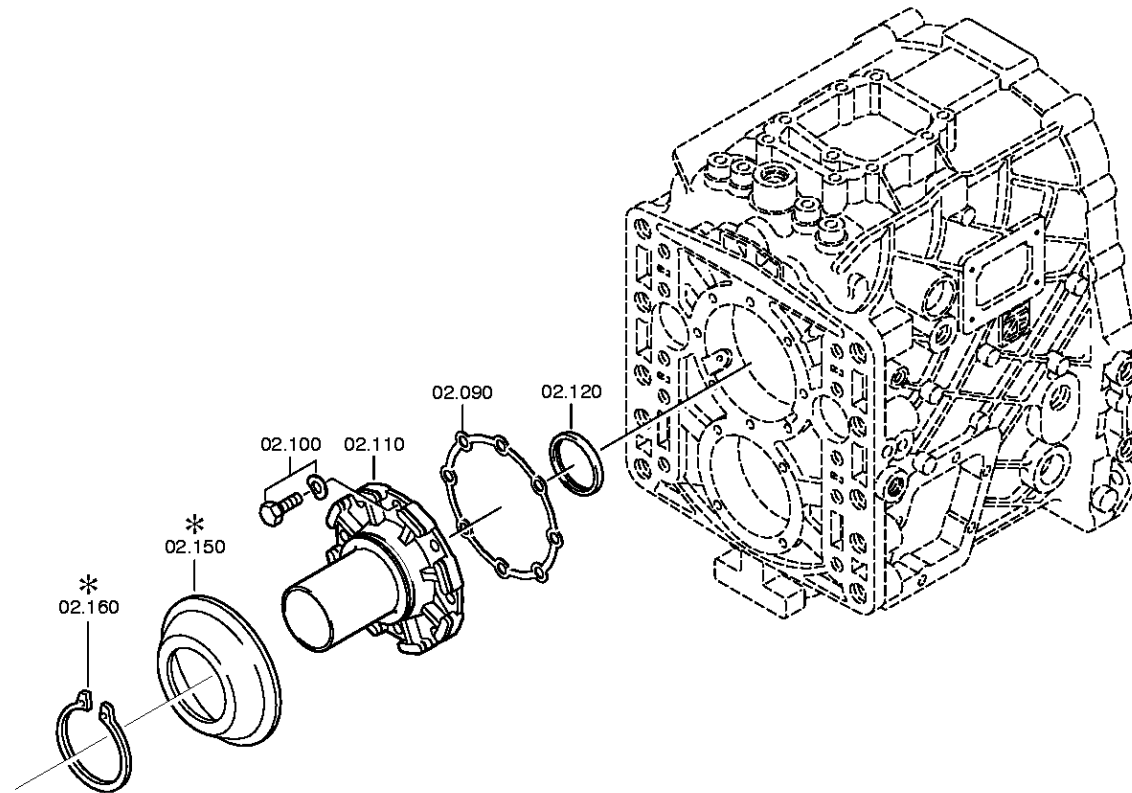
VKF Incidence factor

OTK Optional technical kit

ID Identification (output code)

SP Supplier plant







Pos.	Material number	Name	VKF	Amend. no.	Amend. start	Prod. no.	Material feature / tech. info.	OTK	External material no.	ID	Weight	SP
10	1308.202.064	INPUT SHAFT	1		00.00.0000		KPL.			3	0,000	
/120	0501.311.146	OIL DAM	1		00.00.0000					5	0,000	
/130	1308.302.107	OIL COLLECTING RING	1		00.00.0000					5	0,000	
/140	0631.329.064	SLOTPIN	1		00.00.0000		6X20			5	2,300	
20	1308.304.078	CLUTCH BODY	1		00.00.0000		ENTHALT.IN 1308 304 080(1)			5	0,000	
30	0750.117.312	TAROLLBEARING	1		00.00.0000		WTB 50,8X104,7X30,1			3	0,000	
60	1308.302.029	OIL DAM	1		00.00.0000		ENTHALT.IN 1308 302 028(2)			5	0,000	
70	---	WASHER	1		00.00.0000		WTB 0730 005 479(2)-A= 0,65-2,10( ABSTUFUNG:0,05MM)			3	0,000	
---	0730.005.498	WASHER	1		00.00.0000		A=2,10 IN 0730 005 479(2)			5	0,000	
---	0730.005.497	WASHER	1		00.00.0000		A=2,05 IN 0730 005 479(2)			5	0,000	
---	0730.005.496	WASHER	1		00.00.0000		A=2,00 IN 0730 005 479(2)			5	0,000	
---	0730.005.495	WASHER	1		00.00.0000		A=1,95 IN 0730 005 479(2)			5	0,000	
---	0730.005.494	WASHER	1		00.00.0000		A=1,90 IN 0730 005 479(2)			5	0,000	
---	0730.005.493	WASHER	1		00.00.0000		A=1,85 IN 0730 005 479(2)			5	0,000	
---	0730.005.492	WASHER	1		00.00.0000		A=1,80 IN 0730 005 479(2)			5	0,000	
---	0730.005.491	WASHER	1		00.00.0000		A=1,75 IN 0730 005 479(2)			5	0,000	
---	0730.005.490	WASHER	1		00.00.0000		A=1,70 IN 0730 005 479(2)			5	0,000	
---	0730.005.489	WASHER	1		00.00.0000		A=1,65 IN 0730 005 479(2)			5	0,000	
---	0730.005.488	WASHER	1		00.00.0000		A=1,60 IN 0730 005 479(2)			5	0,000	
---	0730.005.487	WASHER	1		00.00.0000		A=1,55 IN 0730 005 479(2)			5	0,000	
---	0730.005.486	WASHER	1		00.00.0000		A=1,50 IN 0730 005 479(2)			5	0,000	
---	0730.005.485	WASHER	1		00.00.0000		A=1,45 IN 0730 005 479(2)			5	0,000	
---	0730.005.484	WASHER	1		00.00.0000		A=1,40 IN 0730 005 479(2)			5	0,000	
---	0730.005.483	WASHER	1		00.00.0000		A=1,35 IN 0730 005 479(2)			5	0,000	
---	0730.005.482	WASHER	1		00.00.0000		A=1,30 IN 0730 005 479(2)			5	0,000	
---	0730.005.481	WASHER	1		00.00.0000		A=1,25 IN 0730 005 479(2)			5	0,000	
---	0730.005.480	WASHER	1		00.00.0000		A=1,20 IN 0730 005 479(2)			5	0,000	
---	0730.006.545	WASHER	1		00.00.0000		A=1,15 IN 0730 005 479(2)			5	0,000	
---	0730.006.543	WASHER	1		00.00.0000		A=1,10 IN 0730 005 479(2)			5	0,000	
---	0730.006.541	WASHER	1		00.00.0000		A=1,05 IN 0730 005 479(2)			5	0,000	
---	0730.006.539	WASHER	1		00.00.0000		A=1,00 IN 0730 005 479(2)			5	0,000	
---	0730.006.537	WASHER	1		00.00.0000		A=0,95 IN 0730 005 479(2)			5	0,000	

VKF Incidence factor

OTK Optional technical kit

ID Identification (output code)

SP Supplier plant



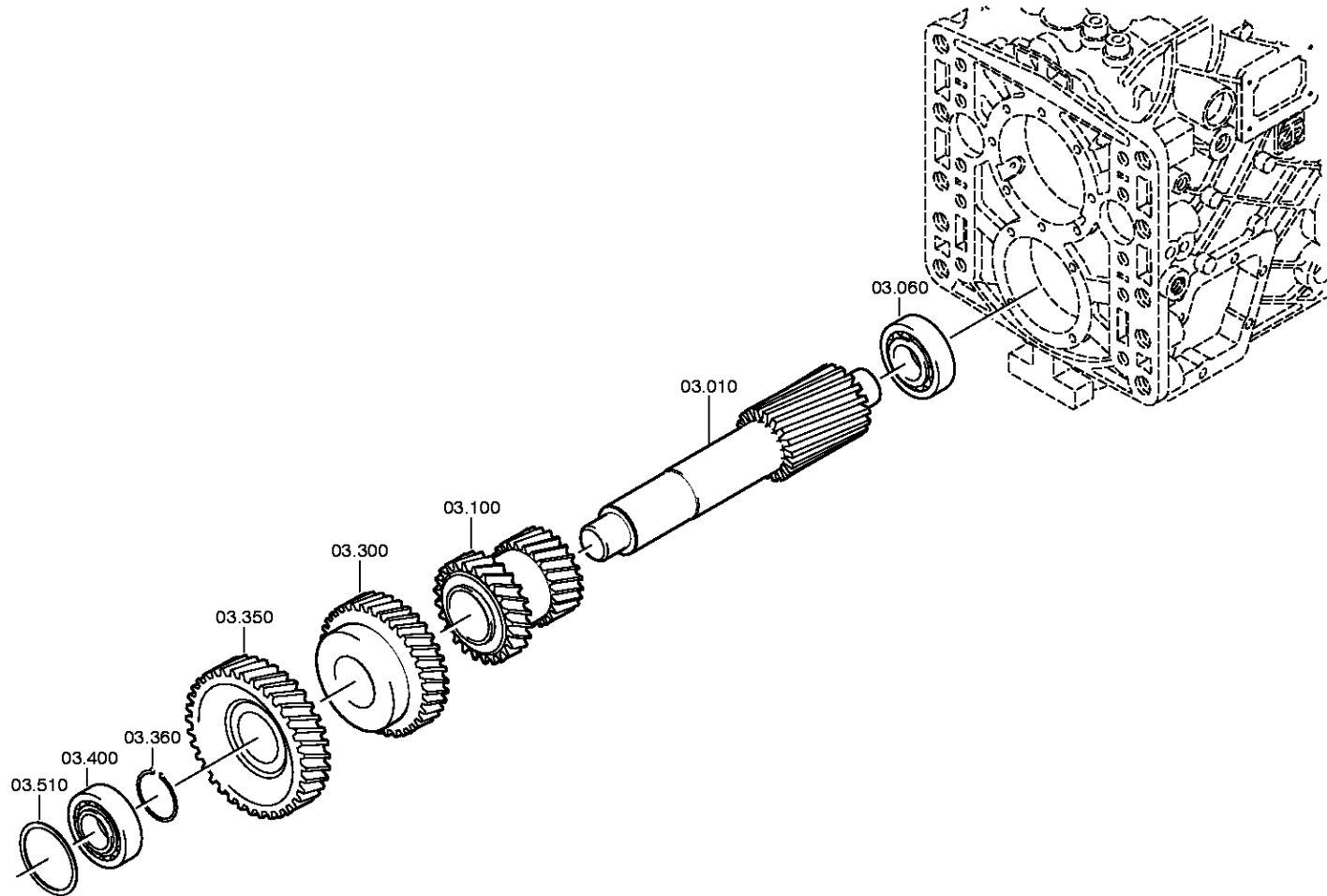
Pos.	Material number	Name	VKF	Amend. no.	Amend. start	Prod. no.	Material feature / tech. info.	OTK	External material no.	ID	Weight	SP
---	0730.006.535	WASHER	1		00.00.0000		A=0,90 IN 0730 005 479(2)			5	0,000	
---	0730.007.358	WASHER	1		00.00.0000		A=0,85 IN 0730 005 479(2)			5	0,000	
---	0730.007.359	WASHER	1		00.00.0000		A=0,80 IN 0730 005 479(2)			5	0,000	
---	0730.007.360	WASHER	1		00.00.0000		A=0,75 IN 0730 005 479(2)			5	0,000	
---	0730.007.361	WASHER	1		00.00.0000		A=0,70 IN 0730 005 479(2)			5	0,000	
---	0730.007.362	WASHER	1		00.00.0000		A=0,65 IN 0730 005 479(2)			5	0,000	
90	1306.302.026	GASKET	1		00.00.0000					5	0,000	
100	0636.015.257	HEXAGON BOLT	8		00.00.0000		M8X25			5	0,010	
110	1308.302.084	CONNPLATE	1		00.00.0000		ENTHALT.IN1308.302.040( 0)			5	0,000	
120	0750.111.149	SHAFT SEAL	1		00.00.0000		WTB 48X65X10			3	0,000	

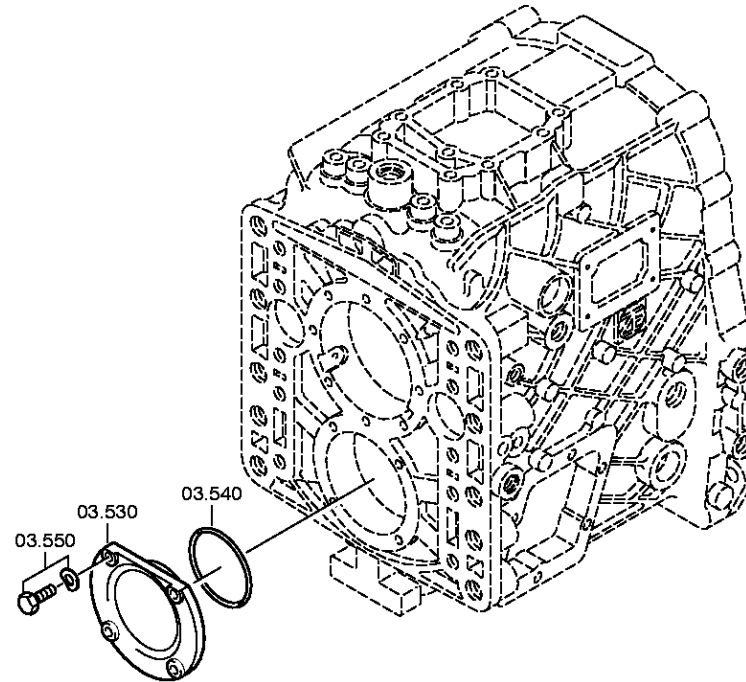
VKF Incidence factor

OTK Optional technical kit

ID Identification (output code)

SP Supplier plant









Pos.	Material number	Name	VKF	Amend. no.	Amend. start	Prod. no.	Material feature / tech. info.	OTK	External material no.	ID	Weight	SP
10	1308.303.022	LAYSHAFT	1		00.00.0000		Z14			5	0,000	
60	0750.117.198	TAROLLBEARING	1		00.00.0000		WTB 39,6X76,2X23,8			3	0,000	
100	1308.303.021	DOUBLE GEAR	1		00.00.0000					5	0,000	
300	1308.303.027	HELICAL GEAR	1		00.00.0000		3G/Z32 IN 1308 303 005(1)			5	0,000	
350	1308.303.023	HELICAL GEAR	1		00.00.0000		KON/Z37 IN 1308 303 002(1)			5	0,000	
360	---	RETAINING RING	1		00.00.0000		WTB 0730 501 488(2)-A= 1,70-2,50( ABSTUFUNG:0,10MM)			3	0,000	
---	0730.501.493	RETAINING RING	1		00.00.0000		A=2,50 IN 0730 501 488(2)			5	0,000	
---	0730.501.492	RETAINING RING	1		00.00.0000		A=2,40 IN 0730 501 488(2)			5	0,000	
---	0730.501.491	RETAINING RING	1		00.00.0000		A=2,30 IN 0730 501 488(2)			5	0,000	
---	0730.501.490	RETAINING RING	1		00.00.0000		A=2,20 IN 0730 501 488(2)			5	0,000	
---	0730.501.489	RETAINING RING	1		00.00.0000		A=2,10 IN 0730 501 488(2)			5	0,000	
---	0630.501.037	RETAINING RING	1		00.00.0000		54X2			5	0,000	
---	0630.501.220	RETAINING RING	1		00.00.0000		54X1,9			5	0,000	
---	0630.501.219	RETAINING RING	1		00.00.0000		54X1,8			5	10	
---	0630.501.380	RETAINING RING	1		00.00.0000		54X1,7			5	0,000	
400	0735.370.742	TAROLLBEARING	1		00.00.0000		39,6X79,9X29,3 FA. TIMKEN			5	0,000	
510	---	WASHER	1		00.00.0000		WTB 0730 104 301(2)-A= 1,30-2,40( ABSTUFUNG:0,05MM)			3	0,000	
---	0730.108.414	WASHER	1		00.00.0000		A=2,40 IN 0730 104 301(2)			5	0,000	
---	0730.107.862	WASHER	1		00.00.0000		A=2,35 IN 0730 104 301(2)A=2,35			5	0,000	
---	0730.107.861	WASHER	1		00.00.0000		A=2,30 IN 0730 104 301(2)			5	0,000	
---	0730.107.860	WASHER	1		00.00.0000		A=2,25 IN 0730 104 301(2)			5	0,000	
---	0730.104.302	WASHER	1		00.00.0000		A=2,20 IN 0730 104 301(2)			5	0,020	
---	0730.107.803	WASHER	1		00.00.0000		A=2,15 IN 0730 104 301(2)			5	20	
---	0730.107.802	WASHER	1		00.00.0000		A=2,10 IN 0730 104 301(2)A=2,10			5	20	
---	0730.107.801	WASHER	1		00.00.0000		A=2,05 IN 0730 104 301(2)A=2,05			5	20	
---	0730.104.303	WASHER	1		00.00.0000		A=2,00 IN 0730 104 301(2)			5	20	
---	0730.107.800	WASHER	1		00.00.0000		A=1,95 IN 0730 104 301(2)A=1,95			5	20	

VKF Incidence factor

OTK Optional technical kit

ID Identification (output code)

SP Supplier plant



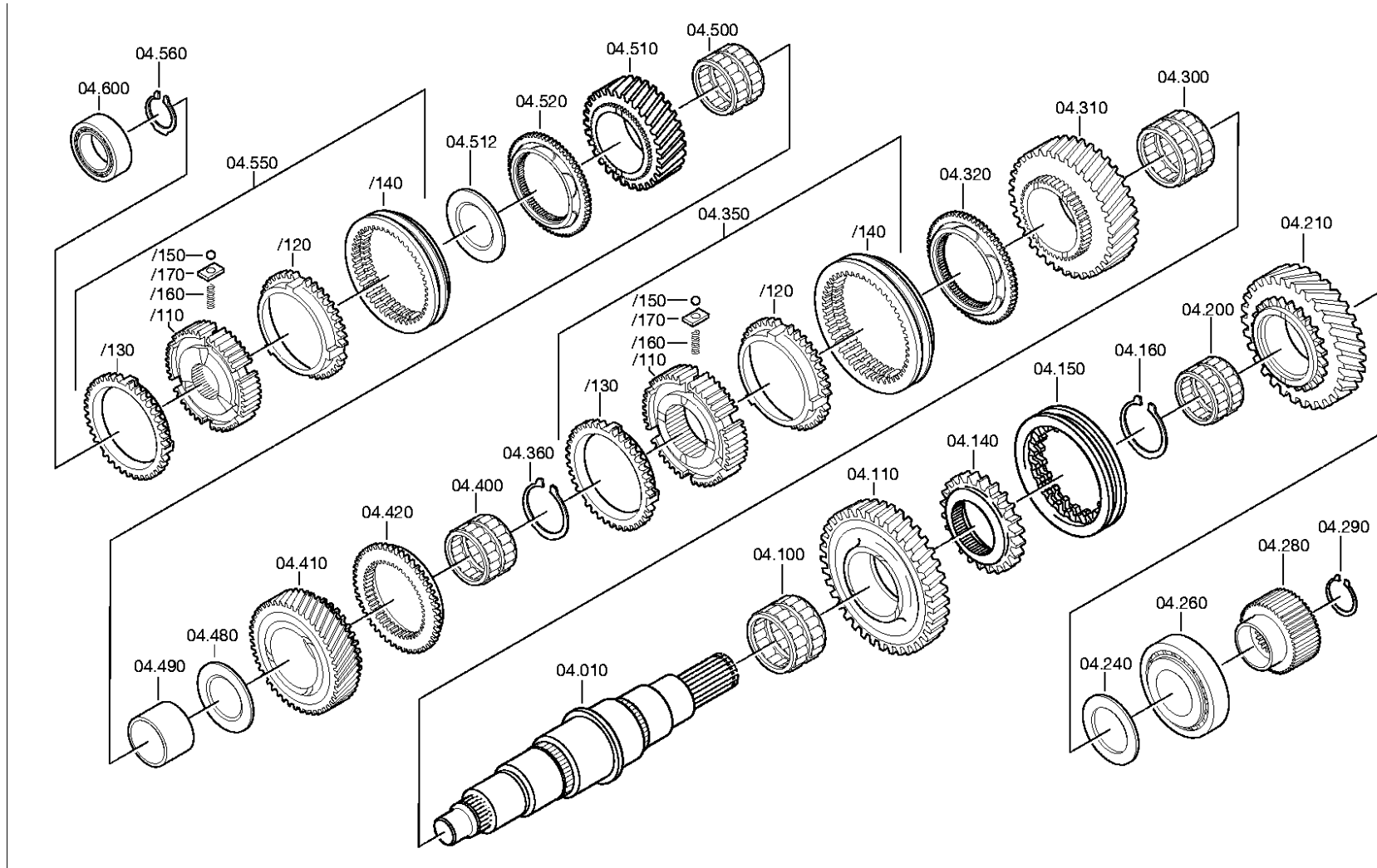
Pos.	Material number	Name	VKF	Amend. no.	Amend. start	Prod. no.	Material feature / tech. info.	OTK	External material no.	ID	Weight	SP
---	0730.107.799	WASHER	1		00.00.0000		A=1,90 IN 0730 104 301(2)A=1,90			5	20	
---	0730.107.798	WASHER	1		00.00.0000		A=1,85 IN 0730 104 301(2)			5	20	
---	0730.106.656	WASHER	1		00.00.0000		A=1,80 IN 0730 104 301(2)			5	15	
---	0730.104.304	WASHER	1		00.00.0000		A=1,75 IN 0730 104 301(2)			5	20	
---	0730.104.305	WASHER	1		00.00.0000		A=1,70 IN 0730 104 301(2)			5	0,000	
---	0730.104.306	WASHER	1		00.00.0000		A=1,65 IN 0730 104 301(2)			5	0,000	
---	0730.104.307	WASHER	1		00.00.0000		A=1,60 IN 0730 104 301(2)			5	0,000	
---	0730.104.308	WASHER	1		00.00.0000		A=1,55 IN 0730 104 301(2)			5	20	
---	0730.104.309	WASHER	1		00.00.0000		A=1,50 IN 0730 104 301(2)			5	0,000	
---	0730.105.290	WASHER	1		00.00.0000		A=1,45 IN 0730 104 301(2)			5	0,000	
---	0730.105.291	WASHER	1		00.00.0000		A=1,40 IN 0730 104 301(2)			5	0,000	
---	0730.105.292	WASHER	1		00.00.0000		A=1,35 IN 0730 104 301(2)			5	0,000	
---	0730.106.655	WASHER	1		00.00.0000		A=1,30 IN 0730 104 301(2)			5	0,000	
530	1308.301.175	COVER	1		00.00.0000					5	0,000	
540	0634.303.121	O-RING	1		00.00.0000		75X2,5			5	0,000	
550	---	HEXAGON BOLT	4		00.00.0000		M8X28Z0 ISO4017/8.8 A3C			3	0,000	
---	0636.015.578	HEXAGON BOLT	4		00.00.0000		M8X28			5	0,000	

VKF Incidence factor

OTK Optional technical kit

ID Identification (output code)

SP Supplier plant





Pos.	Material number	Name	VKF	Amend. no.	Amend. start	Prod. no.	Material feature / tech. info.	OTK	External material no.	ID	Weight	SP
10	1308.304.053	MAIN SHAFT	1		00.00.0000					5	0,000	
100	0750.115.427	NEEDLE CAGE	1		00.00.0000		WTB 67,0X75,0X37,0			3	0,000	
110	1308.304.086	HELICAL GEAR	1		00.00.0000		Z37			5	0,000	
140	1308.304.051	SLEEVE CARRIER	1		00.00.0000					5	0,000	
150	1308.304.087	SLIDING SLEEVE	1		00.00.0000		RG-KLAUE			5	0,000	
160	---	RETAINING RING	1		00.00.0000		WTB 0730 501 404(2)-A= 2,45-2,80( ABSTUFUNG:0,05MM)			3	0,000	
---	0730.501.418	RETAINING RING	1		00.00.0000		A=2,80 IN 0730 501 404(2)			5	0,000	
---	0730.501.417	RETAINING RING	1		00.00.0000		A=2,75 IN 0730 501 404(2)			5	0,000	
---	0730.501.413	RETAINING RING	1		00.00.0000		A=2,70 IN 0730 501 404(2)			5	0,000	
---	0730.501.412	RETAINING RING	1		00.00.0000		A=2,65 IN 0730 501 404(2)			5	0,000	
---	0730.501.411	RETAINING RING	1		00.00.0000		A=2,60 IN 0730 501 404(2)			5	0,000	
---	0730.501.410	RETAINING RING	1		00.00.0000		A=2,55 IN 0730 501 404(2)			5	0,000	
---	0730.501.409	RETAINING RING	1		00.00.0000		A=2,50 IN 0730 501 404(2)			5	0,000	
---	0730.501.408	RETAINING RING	1		00.00.0000		A=2,45 IN 0730 501 404(2)			5	0,000	
200	0750.115.533	NEEDLE CAGE	1	C0100542 5A10	00.00.0000	00.00.0000	WTB 60,0X68,0X31,3			3	0,000	
210	1308.304.052	HELICAL GEAR	1		00.00.0000		RG/Z33			5	0,000	
240	0730.106.496	WASHER	1		00.00.0000		A=4,00			5	0,000	
260	1246.203.008	TAROLLBEARING	1		00.00.0000		KPL.ABTR*S6-66/85=ANTR			3	0,000	
280	1308.304.059	SUN GEAR	1		00.00.0000		Z30 IN 1308 304 058(1)			5	0,000	
290	---	RETAINING RING	1		00.00.0000		WTB 0730 501 288(3)-A= 2,40-3,50( ABSTUFUNG:0,05MM)			3	0,000	
---	0730.501.499	RETAINING RING	1		00.00.0000		A=3,50 IN 0730 501 288(3)			5	0,000	
---	0730.501.498	RETAINING RING	1		00.00.0000		A=3,40 IN 0730 501 288(3)			5	0,000	
---	0730.501.497	RETAINING RING	1		00.00.0000		A=3,30 IN 0730 501 288(3)			5	0,000	
---	0730.501.496	RETAINING RING	1		00.00.0000		A=3,20 IN 0730 501 288(3)			5	0,000	
---	0730.501.495	RETAINING RING	1		00.00.0000		A=3,10 IN 0730 501 288(3)			5	0,000	
---	0630.531.058	RETAINING RING	1		00.00.0000		45X3			5	0,000	
---	0730.501.297	RETAINING RING	1		00.00.0000		A=2,90 IN 0730 501 288(3)			5	0,000	
---	0730.501.296	RETAINING RING	1		00.00.0000		A=2,85 IN 0730 501 288(3)			5	0,000	
---	0730.501.295	RETAINING RING	1		00.00.0000		A=2,80 IN 0730 501 288(3)			5	0,000	
---	0730.501.294	RETAINING RING	1		00.00.0000		A=2,75 IN 0730 501 288(3)			5	0,000	
---	0730.501.293	RETAINING RING	1		00.00.0000		A=2,70 IN 0730 501 288(3)			5	0,000	

VKF Incidence factor

OTK Optional technical kit

ID Identification (output code)

SP Supplier plant



Pos.	Material number	Name	VKF	Amend. no.	Amend. start	Prod. no.	Material feature / tech. info.	OTK	External material no.	ID	Weight	SP
---	0730.501.292	RETAINING RING	1		00.00.0000		A=2,65 IN 0730 501 288(3)			5	0,000	
---	0730.501.291	RETAINING RING	1		00.00.0000		A=2,60 IN 0730 501 288(3)			5	0,000	
---	0730.501.290	RETAINING RING	1		00.00.0000		A=2,55 IN 0730 501 288(3)			5	0,000	
---	0730.501.289	RETAINING RING	1		00.00.0000		A=2,50 IN 0730 501 288(3)			5	0,000	
---	0630.531.293	RETAINING RING	1		00.00.0000		45X2,4			5	10	
300	0735.321.012	NEEDLE CAGE	1		00.00.0000		67,0X75,0X44,0 FA.INA			5	0,000	
310	1308.304.057	HELICAL GEAR	1		00.00.0000		1G/Z34 IN 1308 304 056(1)			5	0,000	
320	1308.304.077	CLUTCH BODY	1		00.00.0000		ENTHALT.IN 1308 304 079(1)			5	0,000	
350	1308.204.026	SYNCHRONIZER	1		00.00.0000		KPL.1+2G			3	0,000	
/110	1308.304.110	SYNCHROBODY	1	C0100025 5F10	00.00.0000	00.00.0000	1/2G ZF-B115I			5	0,000	
/120	1308.304.096	SYNCHROBOD	1	C0100004 5B10	00.00.0000	00.00.0000				5	0,000	
/130	1308.304.096	SYNCHROBOD	1	C0100004 5B10	00.00.0000	00.00.0000				5	0,000	
/140	1308.304.091	SLIDING SLEEVE	1		00.00.0000		ENTHALT.IN 1308 304 099(0)			5	0,000	
/150	0635.460.010	BALL	3		00.00.0000		6			5	1	
/160	0732.041.571	COMPRSPRING	3		00.00.0000					5	0,000	
/170	1307.304.156	PRESSURE PIECE	3	C0100731 7F10	00.00.0000	00.00.0000	ENTHALT.IN 1307 304 155(1)			5	0,000	
360	---	RETAINING RING	1		00.00.0000		WTB 0730 501 404(2)-A= 2,45-2,80( ABSTUFUNG:0,05MM)			3	0,000	
---	0730.501.418	RETAINING RING	1		00.00.0000		A=2,80 IN 0730 501 404(2)			5	0,000	
---	0730.501.417	RETAINING RING	1		00.00.0000		A=2,75 IN 0730 501 404(2)			5	0,000	
---	0730.501.413	RETAINING RING	1		00.00.0000		A=2,70 IN 0730 501 404(2)			5	0,000	
---	0730.501.412	RETAINING RING	1		00.00.0000		A=2,65 IN 0730 501 404(2)			5	0,000	
---	0730.501.411	RETAINING RING	1		00.00.0000		A=2,60 IN 0730 501 404(2)			5	0,000	
---	0730.501.410	RETAINING RING	1		00.00.0000		A=2,55 IN 0730 501 404(2)			5	0,000	
---	0730.501.409	RETAINING RING	1		00.00.0000		A=2,50 IN 0730 501 404(2)			5	0,000	
---	0730.501.408	RETAINING RING	1		00.00.0000		A=2,45 IN 0730 501 404(2)			5	0,000	
400	0735.321.494	NEEDLE CAGE	1	C0100542 5A10	00.00.0000	00.00.0000	60,0X68,0X41,6 FA.INA			5	0,000	
410	1308.304.054	HELICAL GEAR	1		00.00.0000		2G/Z30			5	0,000	
420	1308.304.077	CLUTCH BODY	1		00.00.0000		ENTHALT.IN 1308 304 079(1)			5	0,000	

VKF Incidence factor

OTK Optional technical kit

ID Identification (output code)

SP Supplier plant



Pos.	Material number	Name	VKF	Amend. no.	Amend. start	Prod. no.	Material feature / tech. info.	OTK	External material no.	ID	Weight	SP
480	0730.108.172	WASHER	1		00.00.0000		A=4,15 IN 0730 106 560(1)			5	0,000	
490	0730.162.428	BUSH	1		00.00.0000		A=42,30 IN 0730 161 688(2)			5	0,000	
500	0735.321.494	NEEDLE CAGE	1	C0100542 5A10	00.00.0000	00.00.0000	60,0X68,0X41,6 FA.INA			5	0,000	
510	1308.304.064	HELICAL GEAR	1		00.00.0000		3G/Z30 IN 1308 304 046(1)			5	0,000	
512	0730.108.172	WASHER	1		00.00.0000		A=4,15 IN 0730 106 560(1)			5	0,000	
520	1308.304.078	CLUTCH BODY	1		00.00.0000		ENTHALT.IN 1308 304 080(1)			5	0,000	
550	1308.204.024	SYNCHRONIZER	1		00.00.0000		KPL.3+4G			3	0,000	
/110	1308.304.111	SYNCHROBODY	1	C0100025 5F10	00.00.0000	00.00.0000	3/4G ZF-B100I			5	0,000	
/120	1308.304.097	SYNCHRO RING	1	C0100004 6B10	00.00.0000	00.00.0000	ENTHALT.IN 1307 304 645(1)			5	0,000	
/130	1308.304.097	SYNCHRO RING	1	C0100004 6B10	00.00.0000	00.00.0000	ENTHALT.IN 1307 304 645(1)			5	0,000	
/140	1308.304.090	SLIDING SLEEVE	1		00.00.0000		ZF-B100II 3.+ 4.GANG			5	0,000	
/150	0635.460.010	BALL	3		00.00.0000		6			5	1	
/160	0732.041.571	COMPRSPRING	3		00.00.0000					5	0,000	
/170	1307.304.156	PRESSURE PIECE	3	C0100731 7F10	00.00.0000	00.00.0000	ENTHALT.IN 1307 304 155(1)			5	0,000	
560	---	RETAINING RING	1		00.00.0000		WTB 0730 501 394(2)-A= 2,40-3,10( ABSTUFUNG:0,05MM)			3	0,000	
---	0730.501.502	RETAINING RING	1		00.00.0000		A=3,10 IN 0730 501 394(2)			5	0,000	
---	0730.501.501	RETAINING RING	1		00.00.0000		A=3,00 IN 0730 501 394(2)			5	0,000	
---	0730.501.500	RETAINING RING	1		00.00.0000		A=2,90 IN 0730 501 394(2)			5	0,000	
---	0730.501.416	RETAINING RING	1		00.00.0000		A=2,80 IN 0730 501 394(2)			5	0,000	
---	0730.501.415	RETAINING RING	1		00.00.0000		A=2,75 IN 0730 501 394(2)			5	0,000	
---	0730.501.403	RETAINING RING	1		00.00.0000		A=2,70 IN 0730 501 394(2)			5	0,000	
---	0730.501.402	RETAINING RING	1		00.00.0000		A=2,65 IN 0730 501 394(2)			5	0,000	
---	0730.501.401	RETAINING RING	1		00.00.0000		A=2,60 IN 0730 501 394(2)			5	0,000	
---	0730.501.400	RETAINING RING	1		00.00.0000		A=2,55 IN 0730 501 394(2)			5	0,000	
---	0730.501.399	RETAINING RING	1		00.00.0000		A=2,50 IN 0730 501 394(2)			5	0,000	
---	0730.501.398	RETAINING RING	1		00.00.0000		A=2,45 IN 0730 501 394(2)			5	0,000	
---	0730.501.397	RETAINING RING	1		00.00.0000		A=2,40 IN 0730 501 394(2)			5	0,000	
600	---	TAROLLBEARING	1		00.00.0000		WTB			3	0,000	

VKF Incidence factor

OTK Optional technical kit

ID Identification (output code)

SP Supplier plant



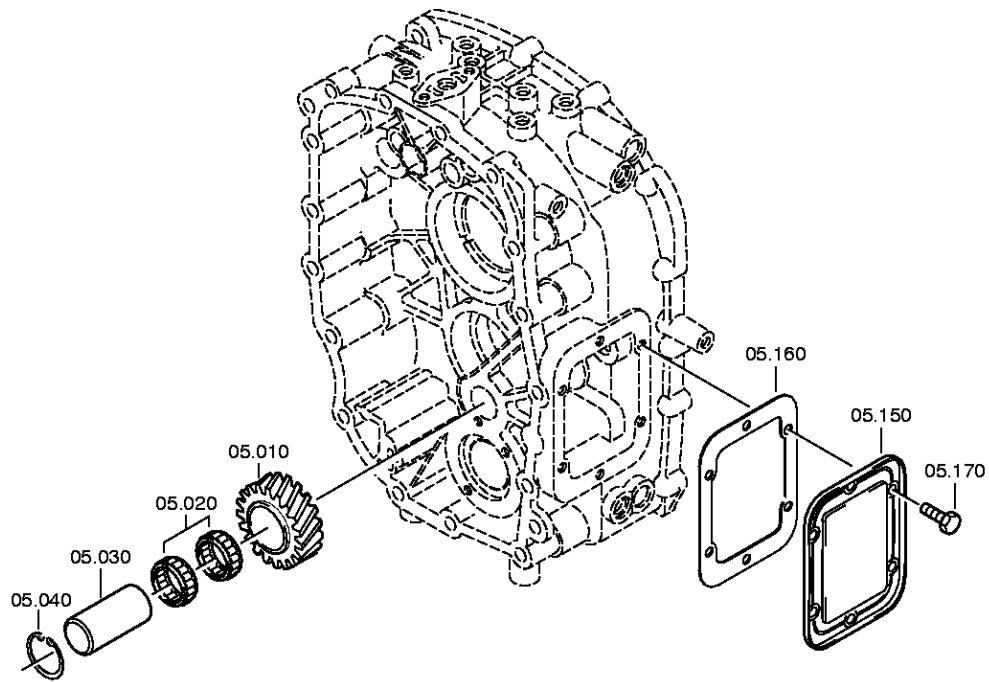
Pos.	Material number	Name	VKF	Amend. no.	Amend. start	Prod. no.	Material feature / tech. info.	OTK	External material no.	ID	Weight	SP
---	1307.203.019	TAROLLBEARING	1		00.00.0000		KPL.			3	0,420	
---	1307.203.010	TAROLLBEARING	1		00.00.0000		KPL.			3	0,000	
---	1307.203.009	TAROLLBEARING	1		00.00.0000		KPL.31,7X66,4X25,4			3	0,000	

**VKF** Incidence factor

**OTK** Optional technical kit

**ID** Identification (output code)

**SP** Supplier plant







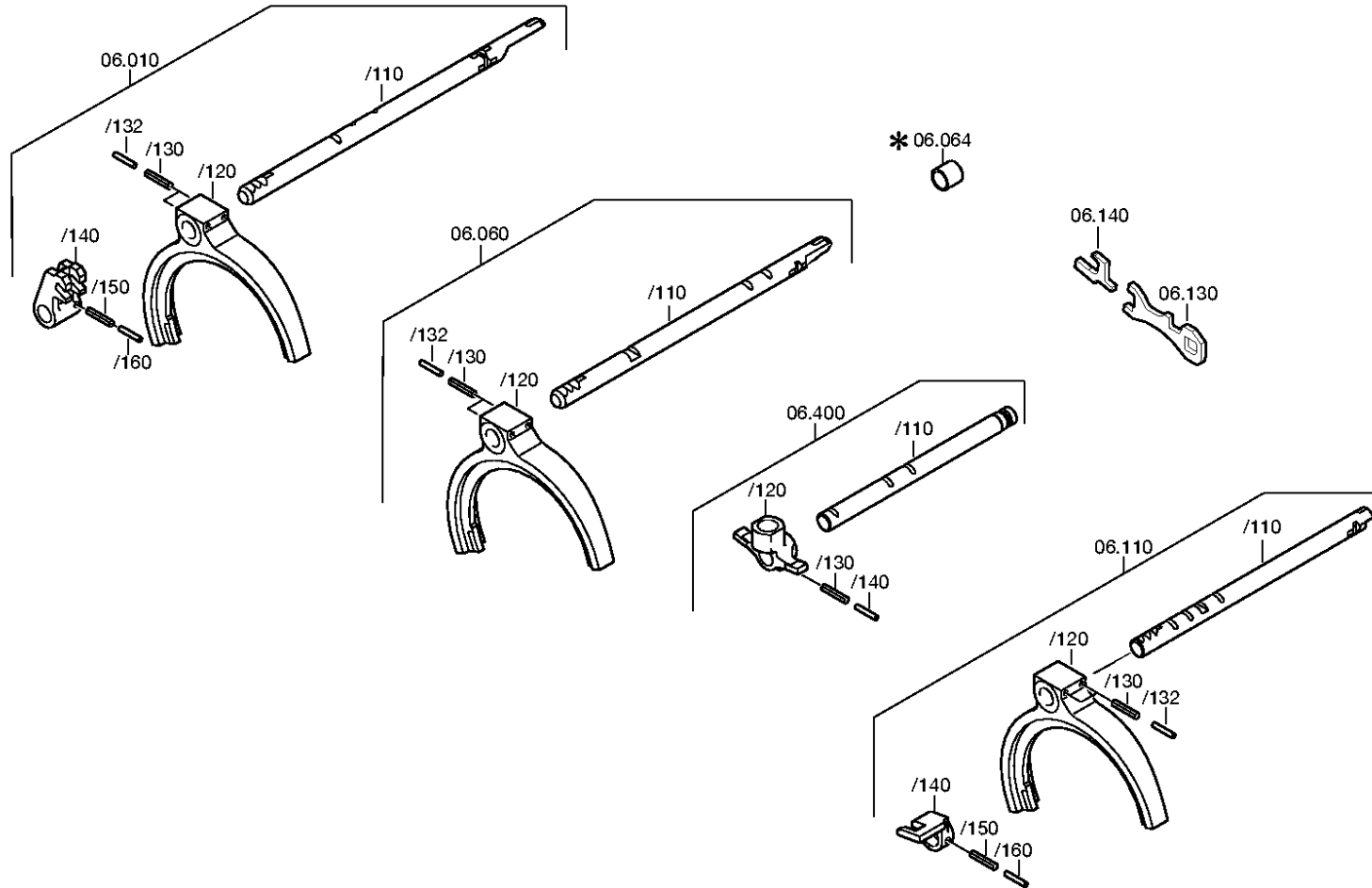
Pos.	Material number	Name	VKF	Amend. no.	Amend. start	Prod. no.	Material feature / tech. info.	OTK	External material no.	ID	Weight	SP
10	1308.305.001	REVERSE IDLER GEAR	1		00.00.0000		Z20 IN 1304 305 029(1)			5	0,000	
20	0750.115.974	ROLLER CAGE	2	C0100485 5F10	00.00.0000	00.00.0000	WTB 40,0X60,0X26,0			3	0,000	
30	1304.305.030	PIN	1		00.00.0000					5	0,000	
40	0630.502.022	RETAINING RING	1		00.00.0000		40X1,75			5	4,800	
150	1304.301.318	COVER	1		00.00.0000					5	0,000	
160	1290.301.140	GASKET	1		00.00.0000		ENTHALT.IN 1290 301 071(1)			5	0,000	
170	---	HEXAGON BOLT	6		00.00.0000		M10X22 DIN933ALT/8.8 A3C			3	0,000	
---	0636.015.445	HEXAGON BOLT	6		00.00.0000		M10X22			5	0,000	

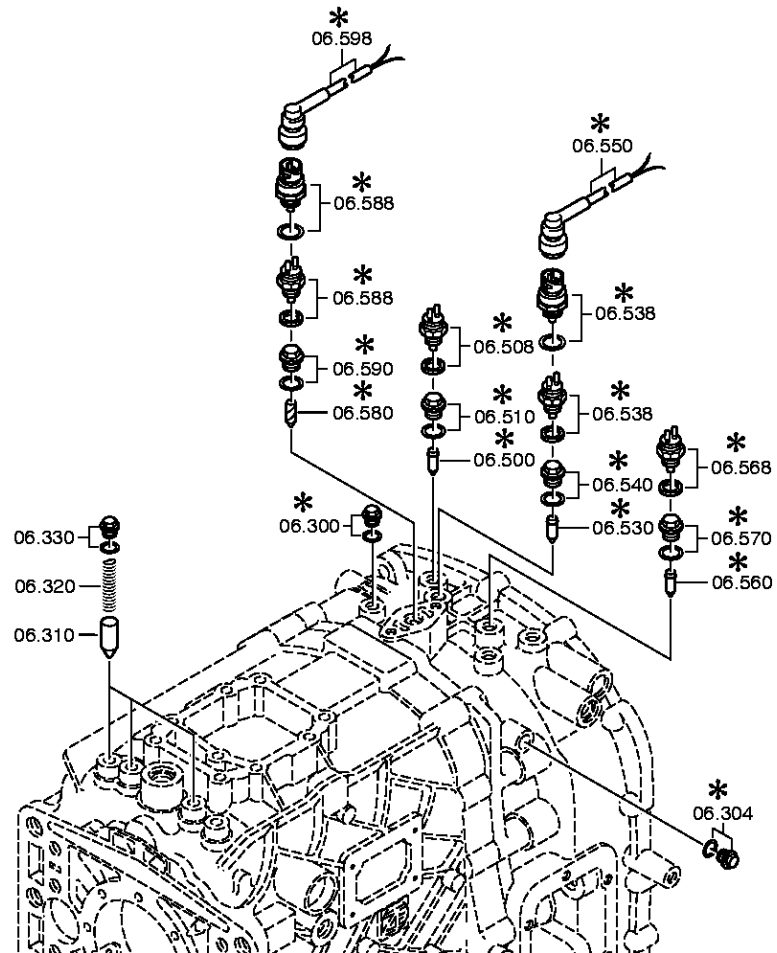
VKF Incidence factor

OTK Optional technical kit

ID Identification (output code)

SP Supplier plant







Pos.	Material number	Name	VKF	Amend. no.	Amend. start	Prod. no.	Material feature / tech. info.	OTK	External material no.	ID	Weight	SP
10	1308.206.061	GEAR SHIFT RAIL	1		00.00.0000		KPL.			3	0,000	
/110	1308.306.072	GEAR SHIFT RAIL	1		00.00.0000		1/2G			5	0,000	
/120	1308.306.037	GEAR SHIFT FORK	1		00.00.0000		1+2G			5	0,000	
/130	0631.329.069	SLOTPIN	2		00.00.0000		6X30			5	4	
/132	0631.329.028	SLOTPIN	2		00.00.0000		3,5X30			5	0,000	
/140	1308.306.024	DRIVER	1		00.00.0000		WB I			5	0,000	
/150	0631.329.069	SLOTPIN	1		00.00.0000		6X30			5	4	
/160	0631.329.028	SLOTPIN	1		00.00.0000		3,5X30			5	0,000	
60	1308.206.060	GEAR SHIFT RAIL	1		00.00.0000		KPL.			3	0,000	
/110	1308.306.071	GEAR SHIFT RAIL	1		00.00.0000		RG			5	0,000	
/120	1308.306.067	GEAR SHIFT FORK	1		00.00.0000					5	0,000	
/130	0631.329.069	SLOTPIN	2		00.00.0000		6X30			5	4	
/132	0631.329.028	SLOTPIN	2		00.00.0000		3,5X30			5	0,000	
110	1308.206.054	GEAR SHIFT RAIL	1		00.00.0000		KPL.			3	0,000	
/110	1308.306.070	GEAR SHIFT RAIL	1		00.00.0000		3/4G			5	0,000	
/120	1308.306.081	GEAR SHIFT FORK	1		00.00.0000		3/4G			5	0,000	
/130	0631.329.069	SLOTPIN	2		00.00.0000		6X30			5	4	
/132	0631.329.028	SLOTPIN	2		00.00.0000		3,5X30			5	0,000	
/140	1308.306.032	DRIVER	1		00.00.0000		3/4 GANG			5	0,000	
/150	0631.329.069	SLOTPIN	1		00.00.0000		6X30			5	4	
/160	0631.329.028	SLOTPIN	1		00.00.0000		3,5X30			5	0,000	
130	1308.306.068	LOCKING SHEET	1		00.00.0000					5	0,000	
140	1308.306.069	LOCKING SHEET	1		00.00.0000					5	0,000	
310	1307.306.170	DETENT PIN	3		00.00.0000					5	0,000	
320	0732.041.946	COMPRSPRING	3		00.00.0000					5	0,000	
330	---	SCREW PLUG	3		00.00.0000		AM12X1,5* 25N.M* DICHTRING			3	0,000	
---	0636.305.072	SCREW PLUG	3		00.00.0000		M12X1,5			5	0,010	
---	0634.801.027	SEALING RING	3		00.00.0000		12X16			5	0,000	
400	1308.206.072	GEAR SHIFT SHAFT	1		00.00.0000		KPL.			3	0,000	
/110	1308.306.096	GEAR SHIFT SHAFT	1		00.00.0000		ENTHALT.IN 1306 306 022(1)			5	0,000	
/120	1308.306.073	GSHIFT FINGER	1		00.00.0000		H-H WBI			5	0,000	
/130	0631.329.069	SLOTPIN	1		00.00.0000		6X30			5	4	
/140	0631.329.028	SLOTPIN	1		00.00.0000		3,5X30			5	0,000	

VKF Incidence factor

OTK Optional technical kit

ID Identification (output code)

SP Supplier plant



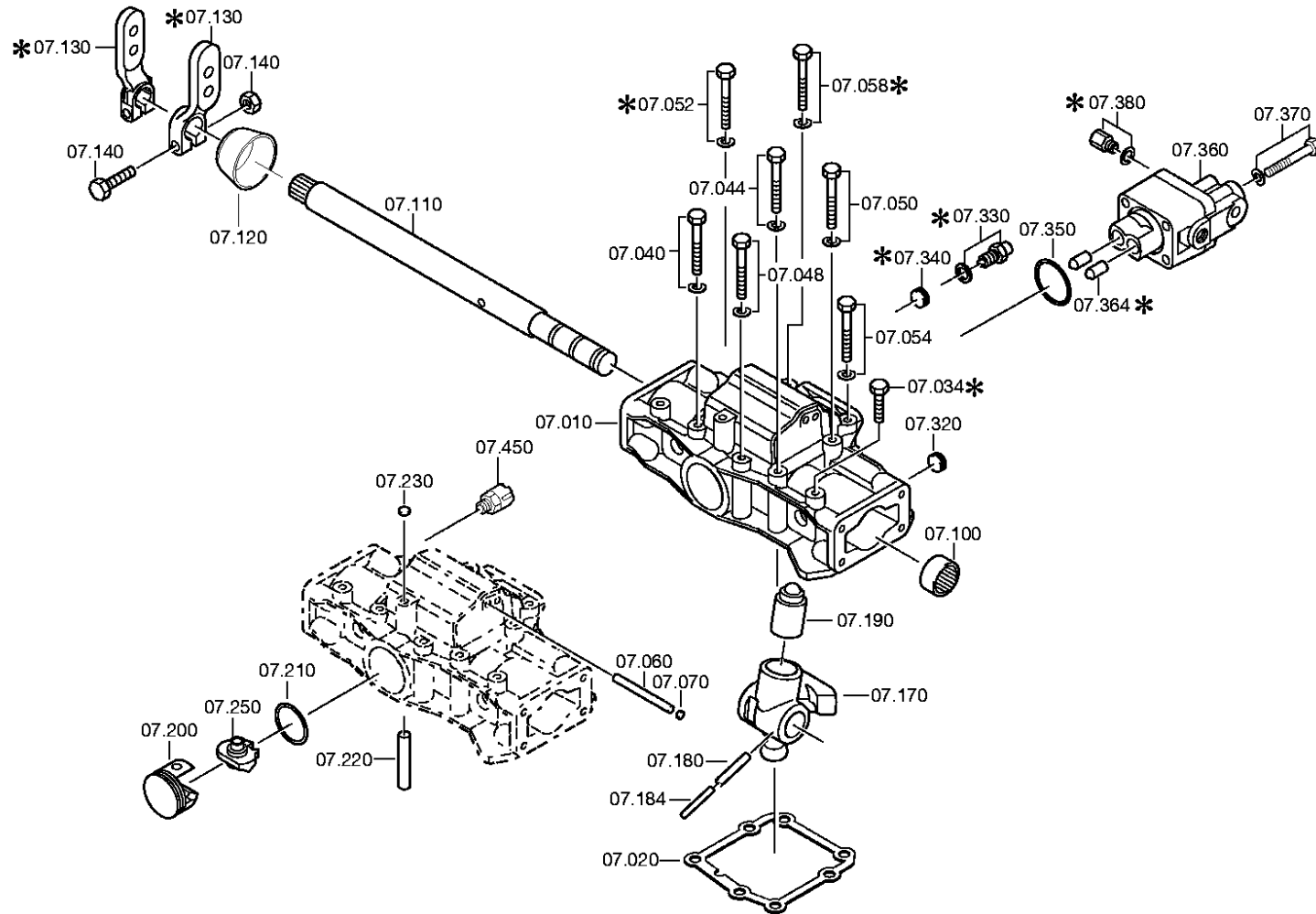
Pos.	Material number	Name	VKF	Amend. no.	Amend. start	Prod. no.	Material feature / tech. info.	OTK	External material no.	ID	Weight	SP
530	1308.206.041	PIN	1		00.00.0000		KPL.			3	0,000	
538	---	SWITCH	1		00.00.0000		SCHL*45N.M*DICHTRING *BAJONETT			3	0,000	
---	0501.210.058	SWITCH	1		00.00.0000		KPL.			5	0,000	
---	0634.801.062	SEALING RING	1		00.00.0000		18X24			5	0,001	
580	1308.206.041	PIN	1		00.00.0000		KPL.			3	0,000	
588	---	SWITCH	1	C0100653 0E10	00.00.0000	00.00.0000	OEFF*45N.M*DICHTRING *BAJONETT			3	0,000	
---	0501.216.474	SWITCH	1		00.00.0000		KPL.			5	0,050	
---	0634.801.062	SEALING RING	1		00.00.0000		18X24			5	0,001	

VKF Incidence factor

OTK Optional technical kit

ID Identification (output code)

SP Supplier plant





Pos.	Material number	Name	VKF	Amend. no.	Amend. start	Prod. no.	Material feature / tech. info.	OTK	External material no.	ID	Weight	SP
10	1308.307.141	GEAR SHIFT HOUSING	1		00.00.0000		ENTHALT.IN 1308 307 140(0)			5	0,000	
20	1308.307.148	GASKET	1		00.00.0000					5	0,000	
40	---	HEXAGON BOLT	1		00.00.0000		M8X125 ISO4014/8.8 A3C			3	0,000	
---	0636.010.620	HEXAGON BOLT	1		00.00.0000		M8X125			5	0,000	
---	0630.302.090	SPRING WASHER	1		00.00.0000					5	0,006	
40	---	HEXAGON BOLT	1		00.00.0000		M8X80			3	0,000	
---	0736.010.203	HEXAGON BOLT	1		00.00.0000					5	0,000	
44	---	HEXAGON BOLT	1		00.00.0000		M8X80			3	0,000	
---	0736.010.203	HEXAGON BOLT	1		00.00.0000					5	0,000	
48	---	HEXAGON BOLT	1		00.00.0000		M8X80			3	0,000	
---	0736.010.203	HEXAGON BOLT	1		00.00.0000					5	0,000	
50	---	HEXAGON BOLT	1		00.00.0000		M8X125 ISO4014/8.8 A3C			3	0,000	
---	0636.010.620	HEXAGON BOLT	1		00.00.0000		M8X125			5	0,000	
---	0630.302.090	SPRING WASHER	1		00.00.0000					5	0,006	
50	---	HEXAGON BOLT	2		00.00.0000		M8X80			3	0,000	
---	0736.010.203	HEXAGON BOLT	2		00.00.0000					5	0,000	
54	---	HEXAGON BOLT	2		00.00.0000		M8X80			3	0,000	
---	0736.010.203	HEXAGON BOLT	2		00.00.0000					5	0,000	
58	---	HEXAGON BOLT	1		00.00.0000		M8X125 ISO4014/8.8 A3C			3	0,000	
---	0636.010.620	HEXAGON BOLT	1		00.00.0000		M8X125			5	0,000	
---	0630.302.090	SPRING WASHER	1		00.00.0000					5	0,006	
60	0731.201.601	PIN	2		00.00.0000		ENTHALT.IN 0731 201 600(3)			5	0,000	
70	0635.460.034	BALL	2		00.00.0000		6,35			5	0,000	
100	0635.303.053	NEEDLE SLEEVE	1		00.00.0000		25X32X20			5	120	
110	1308.307.082	GEAR SHIFT SHAFT	1		00.00.0000		ENTHALT.IN 1308 307 070(1)			5	0,000	
120	1238.307.411	PROTECTING CAP	1		00.00.0000					5	0,000	
170	1308.307.195	GSHIFT FINGER	1	C0100851 1E10	00.00.0000	00.00.0000	WB I			5	0,000	
180	0631.329.085	SLOTPIN	1		00.00.0000		8X36			5	0,010	
184	0631.329.056	SLOTPIN	1		00.00.0000		5X36			5	0,003	
190	0501.206.456	GSHIFT DETENT	1		00.00.0000		KPL. IN 0501 207 250(2)			5	0,000	
200	1315.307.018	COVER	1		00.00.0000					5	0,000	
210	0634.314.021	O-RING	1		00.00.0000		36,2X3			5	0,000	

VKF Incidence factor

OTK Optional technical kit

ID Identification (output code)

SP Supplier plant



Pos.	Material number	Name	VKF	Amend. no.	Amend. start	Prod. no.	Material feature / tech. info.	OTK	External material no.	ID	Weight	SP
220	0731.201.562	PIN	1		00.00.0000					5	0,000	
230	---	SEALING CAP	1	C0100293 6B10	00.00.0000	00.00.0000	10 DIN443 ZFB842			3	0,000	
---	0630.361.104	SEALING CAP	1		00.00.0000					5	0,000	
250	1308.307.135	DETENT PART	1		00.00.0000					5	0,000	
320	---	SCREW PLUG	1	C0100293 4B10	00.00.0000	00.00.0000	M16X1,5 * 35N.M*O. DICHTRG.			3	0,000	
---	0636.301.041	SCREW PLUG	1		00.00.0000		M16X1,5			5	0,010	
330	---	DETENT PLUNGER	1	C0100630 5E10	00.00.0000	00.00.0000	88N*50N.M*90GRAD			3	0,000	
---	1304.207.041	DETENT PLUNGER	1		00.00.0000		KPL. IN 1304 207 015(1)			3	0,000	
---	0730.008.604	SEALING RING	1		00.00.0000		A16X22			5	0,000	
350	0634.313.505	O-RING	1		00.00.0000		42X3			5	0,000	
360	6038.202.043	CUT-OFF VALVE	1	C0100242 9C10	00.00.0000	00.00.0000	KPL.H-H*ZULUFTDROSSEL 1,55			3	0,000	
364	0501.209.188	BALL ROLLER	2		00.00.0000		KPL.			5	0,000	
370	---	HEXAGON BOLT	4		00.00.0000		M8X65 ISO4014/8.8 A3C			3	0,000	
---	0636.010.575	HEXAGON BOLT	4		00.00.0000		M8X65			5	0,000	
---	0630.001.075	WASHER	4		00.00.0000					5	0,002	
450	---	BREATHER	1		00.00.0000		M10X1KEG			3	0,000	
---	0501.202.797	BREATHER	1		00.00.0000		KPL.			3	30	

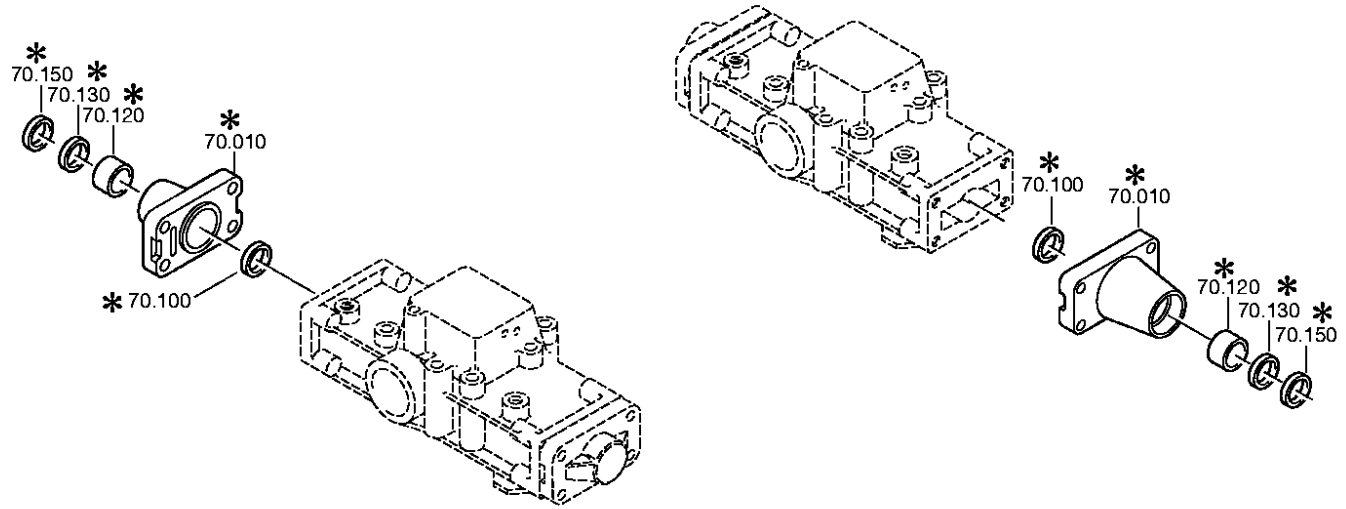
VKF Incidence factor

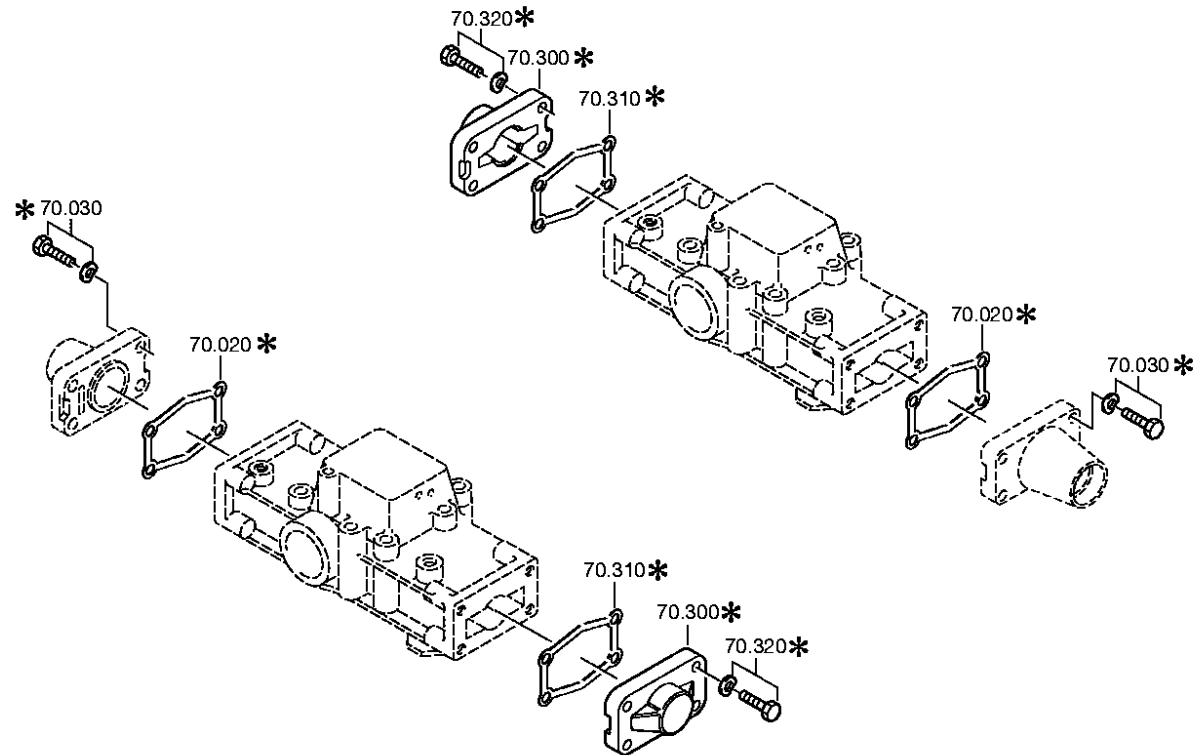
OTK Optional technical kit

ID Identification (output code)

SP Supplier plant









Pos.	Material number	Name	VKF	Amend. no.	Amend. start	Prod. no.	Material feature / tech. info.	OTK	External material no.	ID	Weight	SP
10	1304.307.425	GEAR SHIFT COVER	1		00.00.0000					5	0,000	
20	0501.318.308	GASKET	1	C0100499 1B10	00.00.0000	00.00.0000				5	0,000	
30	---	HEXAGON BOLT	4		00.00.0000		M8X30 ISO4017/8.8 A3C			3	0,000	
---	0636.015.321	HEXAGON BOLT	4		00.00.0000		M8X30			5	0,010	
---	0630.302.090	SPRING WASHER	4		00.00.0000					5	0,006	
100	0634.300.020	SHAFT SEAL	1		00.00.0000		25X32X5			5	0,000	
120	0730.260.330	BEARING BUSH	1		00.00.0000		A=20,00 IN 0730 260 546(2)			5	0,000	
130	0634.300.302	SHAFT SEAL	1		00.00.0000		25X35X7			5	0,000	
150	0634.307.367	SCRAPER	1		00.00.0000					5	0,009	
300	---	COVER	1		00.00.0000		WTB			3	0,000	
---	1304.307.154	COVER	1		00.00.0000					5	0,000	
---	1304.307.069	COVER	1		00.00.0000					5	0,000	
310	0501.318.308	GASKET	1	C0100499 1B10	00.00.0000	00.00.0000				5	0,000	
320	---	HEXAGON BOLT	4		00.00.0000		M8X30 ISO4017/8.8 A3C			3	0,000	
---	0636.015.321	HEXAGON BOLT	4		00.00.0000		M8X30			5	0,010	
---	0630.302.090	SPRING WASHER	4		00.00.0000					5	0,006	

VKF Incidence factor

OTK Optional technical kit

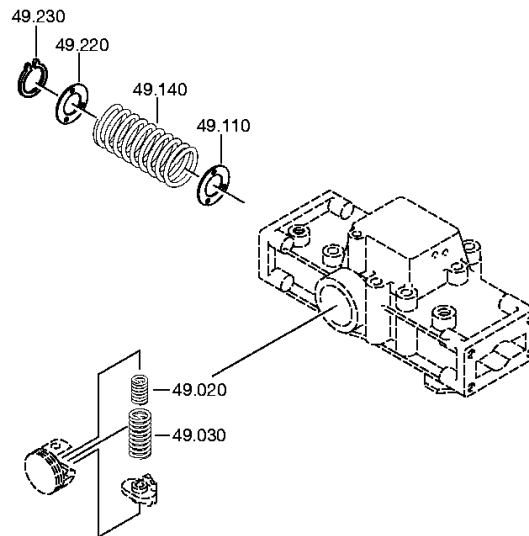
ID Identification (output code)

SP Supplier plant



Bildtafel:  
Figure: 064.12.09  
Figure:  
Figura:

---





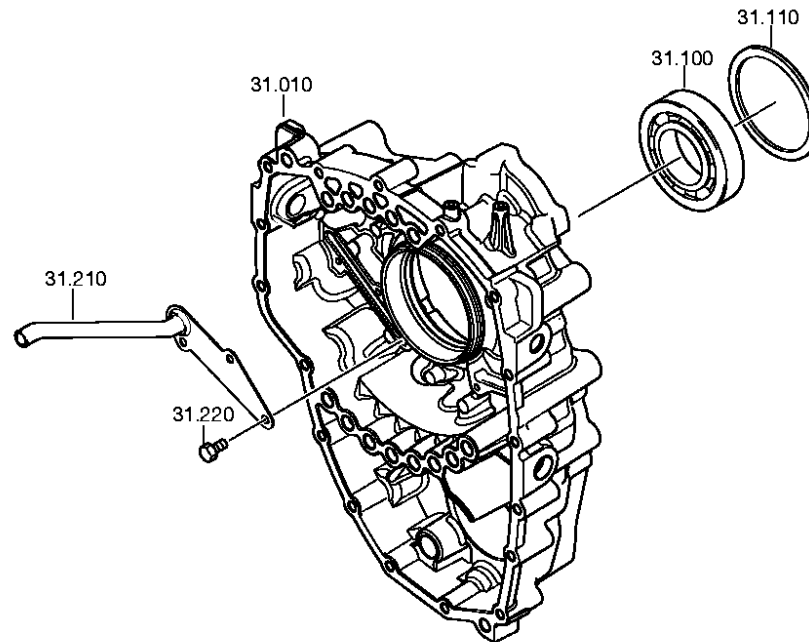
Pos.	Material number	Name	VKF	Amend. no.	Amend. start	Prod. no.	Material feature / tech. info.	OTK	External material no.	ID	Weight	SP
20	0732.042.366	COMPRSPRING	1		00.00.0000					5	0,000	
30	0732.042.365	COMPRSPRING	1		00.00.0000					5	0,000	
110	0730.104.083	WASHER	1		00.00.0000		A=2,00 IN 0730 104 527(2)			5	0,000	
140	0732.040.237	COMPRSPRING	1		00.00.0000					5	30	
220	0730.104.083	WASHER	1		00.00.0000		A=2,00 IN 0730 104 527(2)			5	0,000	
230	0630.532.138	V-RING	1		00.00.0000					5	0,000	

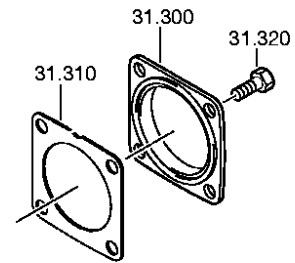
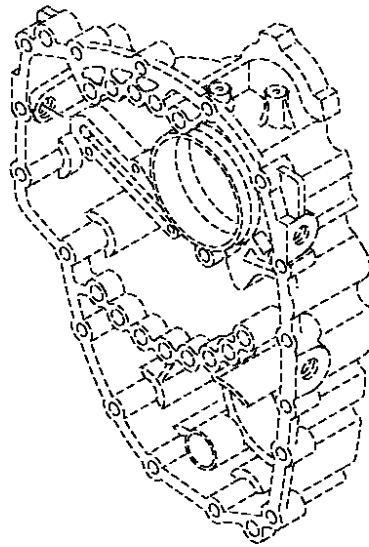
**VKF** Incidence factor

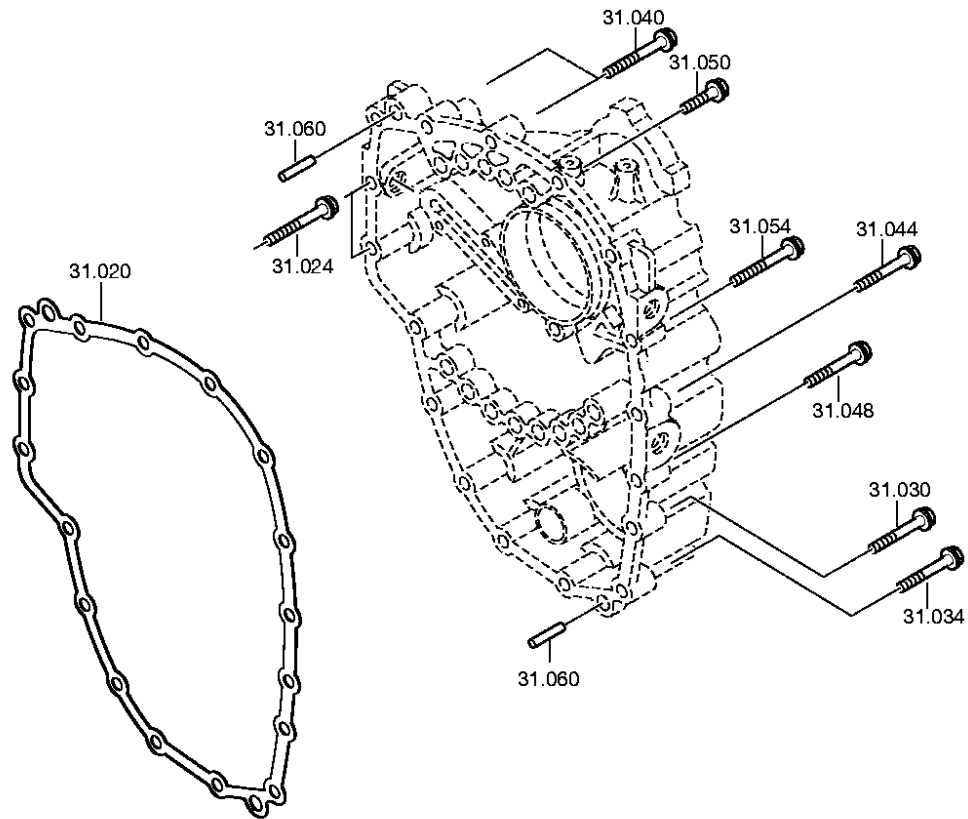
**OTK** Optional technical kit

**ID** Identification (output code)

**SP** Supplier plant











Pos.	Material number	Name	VKF	Amend. no.	Amend. start	Prod. no.	Material feature / tech. info.	OTK	External material no.	ID	Weight	SP
10	1308.301.235	HOUSING	1	C0100118 6F10	00.00.0000	00.00.0000				5	0,000	
20	1308.301.026	GASKET	1		00.00.0000					5	0,000	
24	---	HEXAGON BOLT	2		00.00.0000		M8X60Z1 ISO4014/10.9 A3CSM			3	0,000	
---	0736.010.187	HEXAGON BOLT	2		00.00.0000		M8X60 IN 0736 010 184(2)			5	0,000	
30	---	HEXAGON BOLT	7		00.00.0000		M8X60Z1 ISO4014/10.9 A3CSM			3	0,000	
---	0736.010.187	HEXAGON BOLT	7		00.00.0000		M8X60 IN 0736 010 184(2)			5	0,000	
34	---	HEXAGON BOLT	2		00.00.0000		M8X60Z1 ISO4014/10.9 A3CSM			3	0,000	
---	0736.010.187	HEXAGON BOLT	2		00.00.0000		M8X60 IN 0736 010 184(2)			5	0,000	
40	---	HEXAGON BOLT	2		00.00.0000		M8X60Z1 ISO4014/10.9 A3CSM			3	0,000	
---	0736.010.187	HEXAGON BOLT	2		00.00.0000		M8X60 IN 0736 010 184(2)			5	0,000	
44	---	HEXAGON BOLT	1		00.00.0000		M8X60Z1 ISO4014/10.9 A3CSM			3	0,000	
---	0736.010.187	HEXAGON BOLT	1		00.00.0000		M8X60 IN 0736 010 184(2)			5	0,000	
48	---	HEXAGON BOLT	1		00.00.0000		M8X60Z1 ISO4014/10.9 A3CSM			3	0,000	
---	0736.010.187	HEXAGON BOLT	1		00.00.0000		M8X60 IN 0736 010 184(2)			5	0,000	
50	0636.010.772	HEXAGON BOLT	1		00.00.0000		M8X45			5	0,000	
54	---	HEXAGON BOLT	1		00.00.0000		M8X60Z1 ISO4014/10.9 A3CSM			3	0,000	
---	0736.010.187	HEXAGON BOLT	1		00.00.0000		M8X60 IN 0736 010 184(2)			5	0,000	
60	0731.201.620	CYLINDRICAL PIN	2		00.00.0000					5	0,000	
100	0735.330.597	BALL BEARING	1		00.00.0000		65,0X120,0X23,0 FA.SKF			5	0,000	
110	---	SHIM	1		00.00.0000		WTB 0730 006 163(2)-A= 1,10- 1,80( ABSTUFUNG:0,10MM)			3	0,000	
---	0730.002.654	SHIM	1		00.00.0000		A=1,80 IN 0730 006 163(2)			5	47	
---	0730.002.655	SHIM	1		00.00.0000		A=1,70 IN 0730 006 163(2)			5	0,040	
---	0730.002.656	SHIM	1		00.00.0000		A=1,60 IN 0730 006 163(2)			5	43	
---	0730.002.657	SHIM	1		00.00.0000		A=1,50 IN 0730 006 163(2)			5	39	
---	0730.002.658	SHIM	1		00.00.0000		A=1,40 IN 0730 006 163(2)			5	0,030	

VKF Incidence factor

OTK Optional technical kit

ID Identification (output code)

SP Supplier plant



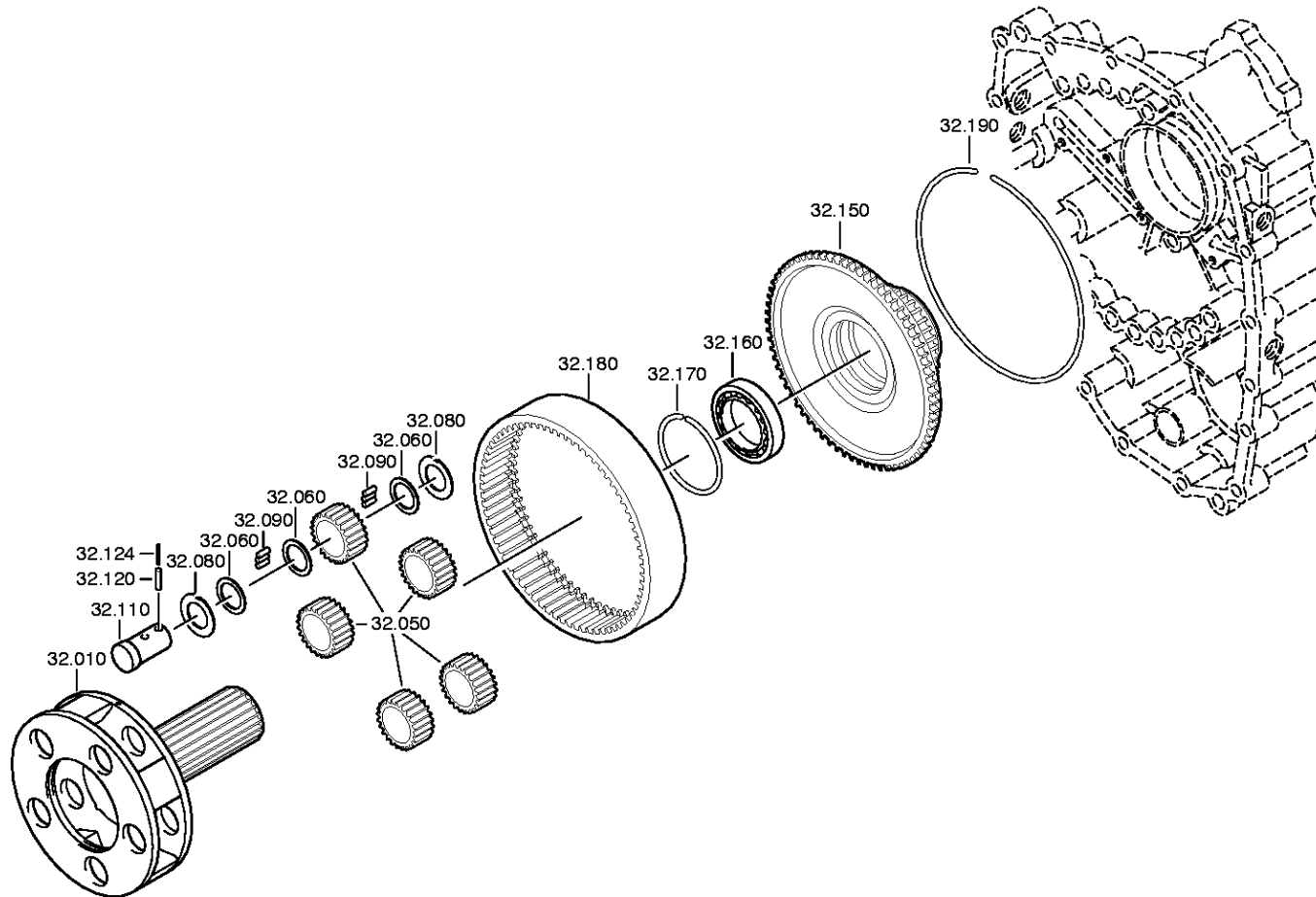
Pos.	Material number	Name	VKF	Amend. no.	Amend. start	Prod. no.	Material feature / tech. info.	OTK	External material no.	ID	Weight	SP
---	0730.002.659	SHIM	1		00.00.0000		A=1,30 IN 0730 006 163(2)			5	29	
---	0730.002.660	SHIM	1		00.00.0000		A=1,20 IN 0730 006 163(2)			5	32	
---	0730.002.661	SHIM	1		00.00.0000		A=1,10 IN 0730 006 163(2)			5	29	
210	1308.201.002	PIPE	1		00.00.0000		KPL.			3	0,000	
220	0636.015.296	HEXAGON BOLT	3		00.00.0000		M6X16			5	0,000	
300	1304.301.034	COVER	1		00.00.0000					5	0,000	
310	1238.308.201	GASKET	1		00.00.0000		ENTHALT.IN 1238 308 202(2)			5	0,000	
320	---	HEXAGON BOLT	4	C0100822 9E10	00.00.0000	00.00.0000	M12X25 DIN933ALT/8.8 A3C			3	0,000	
---	0636.016.178	HEXAGON BOLT	4		00.00.0000		M12X25			5	0,035	

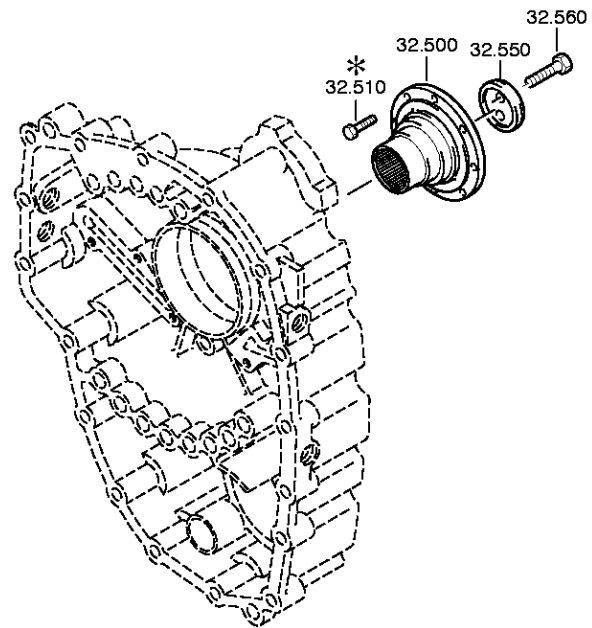
VKF Incidence factor

OTK Optional technical kit

ID Identification (output code)

SP Supplier plant







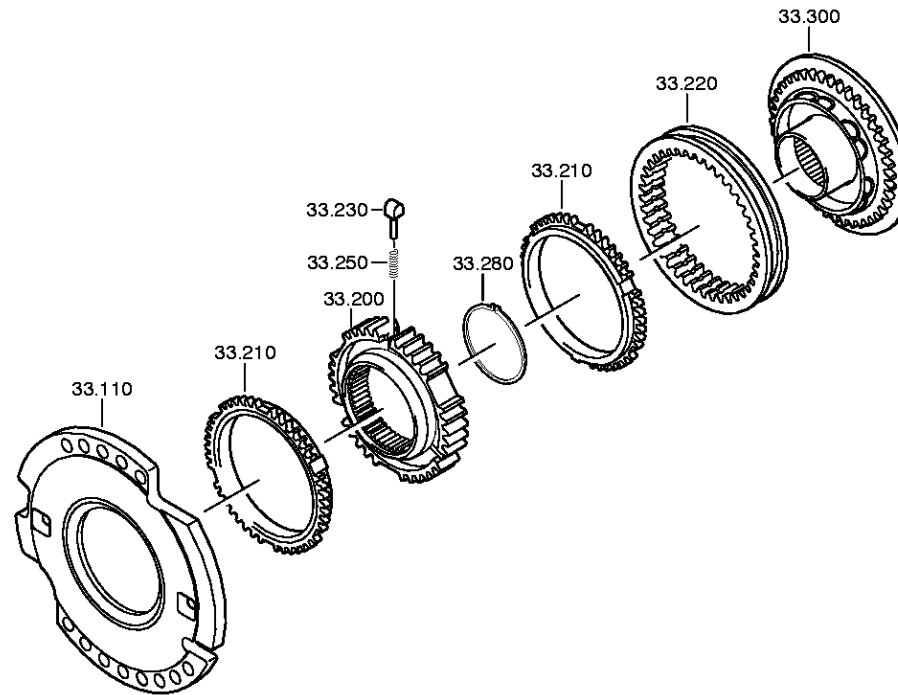
Pos.	Material number	Name	VKF	Amend. no.	Amend. start	Prod. no.	Material feature / tech. info.	OTK	External material no.	ID	Weight	SP
10	1308.232.011	PLANET CARRIER	1		00.00.0000		KPL.			3	0,000	
50	1308.232.007	PLANET GEAR SET	1		00.00.0000		KPL.			3	0,000	
60	0730.103.102	INTERWASHER	15		00.00.0000		A=1,50 IN 0730 105 951(2)			5	0,000	
80	0730.150.767	WASHER	10		00.00.0000		A=1,50 IN 0501 304 086(2)			5	0,000	
90	0735.470.155	NEEDLE ROLLER	200		00.00.0000		5,0X11,8 FA.INA			5	0,000	
110	1308.332.004	PLANET SHAFT	5		00.00.0000					5	0,000	
120	0631.329.049	SLOTPIN	5		00.00.0000		5X22			5	2	
124	0631.329.175	SLOTPIN	5		00.00.0000		3X22			5	0,000	
150	1308.332.034	RING GEAR CARRIER	1		00.00.0000		ENTHALT.IN 1308 332 029(1)			5	0,000	
160	0635.338.090	BALL BEARING	1		00.00.0000		65X85X10			5	0,000	
170	---	SNAP RING	1	C0100785 3810	00.00.0000	00.00.0000	WTB 0730 513 572(3)-A= 1,80-2,20( ABSTUFUNG:0,10MM)			3	0,000	
---	0730.513.574	SNAP RING	1		00.00.0000		A=2,20 IN 0730 513 572(3)			5	0,000	
---	0730.513.573	SNAP RING	1		00.00.0000		A=2,10 IN 0730 513 572(3)			5	0,000	
---	0730.513.744	SNAP RING	1		00.00.0000		A=2,00 IN 0730 513 572(3)			5	0,000	
---	0730.513.743	SNAP RING	1		00.00.0000		A=1,90 IN 0730 513 572(3)			5	0,000	
---	0730.513.742	SNAP RING	1		00.00.0000		A=1,80 IN 0730 513 572(3)			5	0,000	
180	1308.332.026	RING GEAR	1		00.00.0000		Z75 IN 1308 332 028(1)			5	0,000	
190	0730.505.149	LOCKING WIRE	1		00.00.0000		A=2,00 IN 0730 505 052(2)			5	0,000	
500	1308.338.025	OUTPUT FLANGE	1		00.00.0000					5	0,000	
550	1240.304.117	WASHER	1		00.00.0000		ENTHALT.IN 1240 304 427(2)			5	0,000	
560	---	HEXAGON BOLT	2		00.00.0000		M12X50 DIN933ALT/8.8 A3C			3	0,000	
---	0636.016.180	HEXAGON BOLT	2		00.00.0000		M12X50			5	55	

VKF Incidence factor

OTK Optional technical kit

ID Identification (output code)

SP Supplier plant





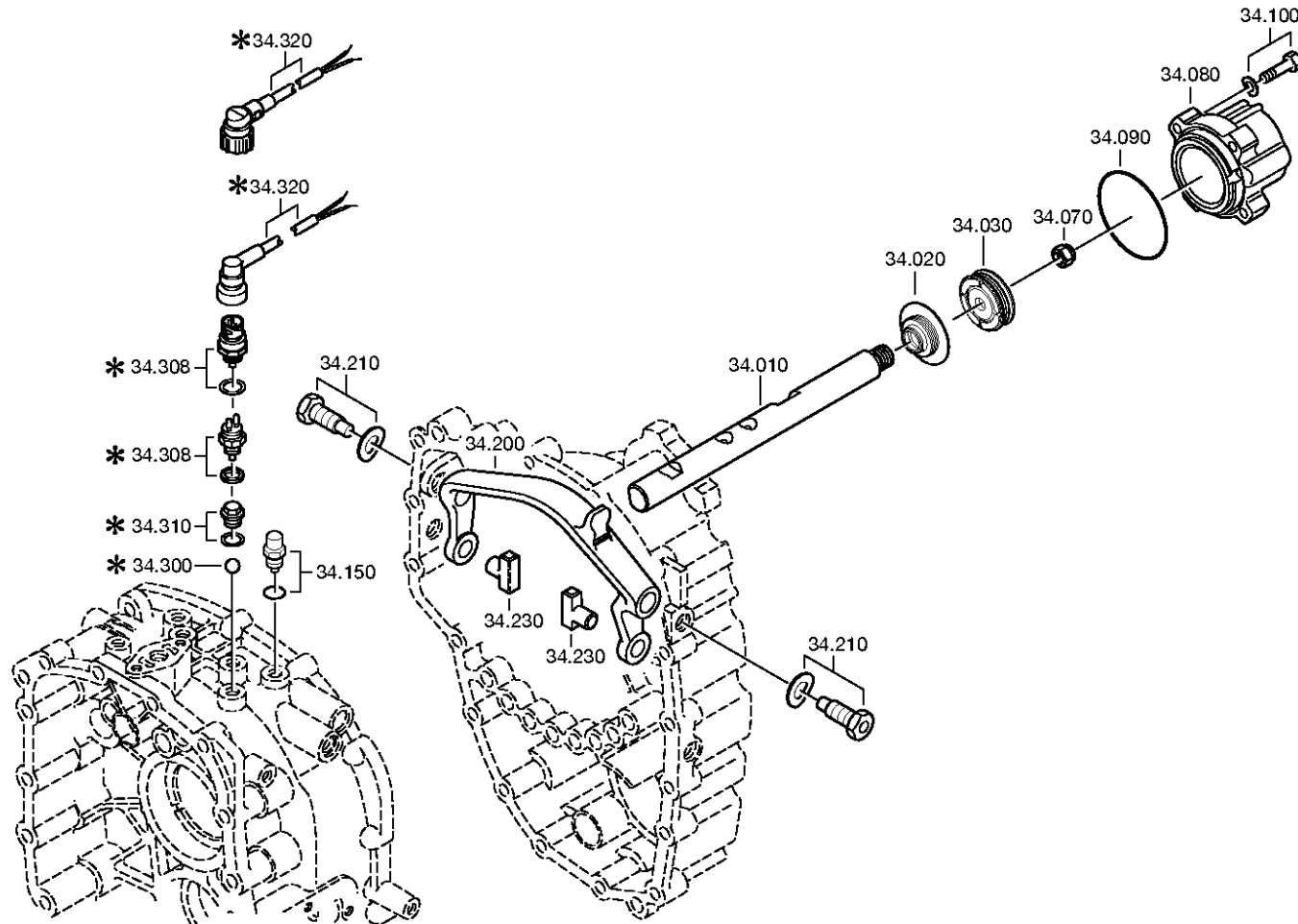
Pos.	Material number	Name	VKF	Amend. no.	Amend. start	Prod. no.	Material feature / tech. info.	OTK	External material no.	ID	Weight	SP
110	1308.233.003	CLUTCH BODY	1	C0100233 3A10	00.00.0000	00.00.0000	KPL.			3	0,000	
200	1308.332.036	SYNCHROBODY	1		00.00.0000		ZF-BK131			5	0,000	
210	1268.304.594	SYNCHRORING	2		00.00.0000		ZFBK 131			5	0,000	
220	1308.332.015	SLIDING SLEEVE	1		00.00.0000		ENTHALT.IN 1308 332 037(1)			5	0,000	
230	1297.304.437	PRESSURE PIECE	3		00.00.0000					5	0,000	
250	0732.040.409	COMPRSPRING	3	C0100731 7F10	00.00.0000	00.00.0000				5	0,002	
280	---	RETAINING RING	1		00.00.0000		WTB -A= 2,90- 3,20( ABSTUFUNG:0,10MM)			3	0,000	
---	0730.501.505	RETAINING RING	1		00.00.0000		A=3,20 IN 0730 501 503(2)			5	0,000	
---	0730.501.504	RETAINING RING	1		00.00.0000		A=3,10 IN 0730 501 503(2)			5	0,000	
---	0630.531.138	RETAINING RING	1		00.00.0000		92X3			5	0,000	
---	0730.501.574	RETAINING RING	1		00.00.0000		A=2,90 IN 0730 501 503(2)			5	0,000	
300	1308.232.010	CLUTCH BODY	1		00.00.0000		KPL.			3	0,000	

VKF Incidence factor

OTK Optional technical kit

ID Identification (output code)

SP Supplier plant







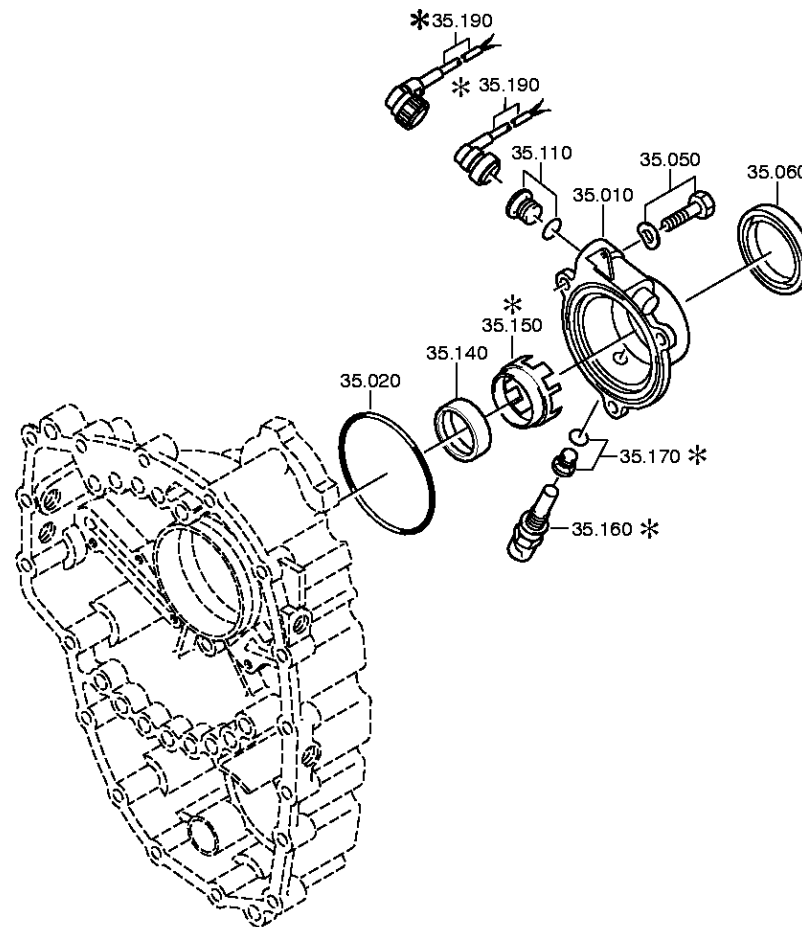
Pos.	Material number	Name	VKF	Amend. no.	Amend. start	Prod. no.	Material feature / tech. info.	OTK	External material no.	ID	Weight	SP
10	1308.334.014	GEAR SHIFT RAIL	1		00.00.0000					5	0,000	
20	0750.111.571	FLANGE PACKING	1	C0100512 4F10	00.00.0000	00.00.0000	WTB*22X36X14,5			3	0,000	
30	0734.309.377	PISTON	1		00.00.0000					5	0,000	
70	---	LOCKING NUT	1		00.00.0000		M16X1,5 ZFN99			3	0,000	
---	0737.006.095	LOCKING NUT	1		00.00.0000		MS16X1,5 ZFN99			5	0,000	
80	1308.334.011	CYLINDER	1		00.00.0000					5	0,000	
90	0634.313.216	O-RING	1		00.00.0000		82X2,5			5	0,000	
100	---	HEXAGON BOLT	4		00.00.0000		M8X30 ISO4017/8.8 A3C			3	0,000	
---	0636.015.321	HEXAGON BOLT	4		00.00.0000		M8X30			5	0,010	
---	0630.302.090	SPRING WASHER	4		00.00.0000					5	0,006	
150	---	DETENT PLUNGER	1	C0100630 5E10	00.00.0000	00.00.0000	105N*50N.M*90GRAD			3	0,000	
---	1313.207.004	DETENT PLUNGER	1		00.00.0000		KPL. IN 1313 207 001(2)			3	0,060	
---	0730.008.604	SEALING RING	1		00.00.0000		A16X22			5	0,000	
200	1308.334.001	GEAR SHIFT FORK	1		00.00.0000					5	0,000	
210	---	ARTICULATION BOLT	2		00.00.0000		M20X1,5			3	0,000	
---	1304.332.041	ARTICULATION BOLT	2		00.00.0000		M20X1,5 IN 1304 306 037(2)			5	0,000	
---	0630.302.064	SPRING WASHER	2		00.00.0000					5	8	
230	1297.306.120	SLIDING PAD	2		00.00.0000					5	0,000	
310	---	SCREW PLUG	1		00.00.0000		M18X1,5 * 35N.M* DICHRING			3	0,000	
---	0636.302.021	SCREW PLUG	1		00.00.0000		M18X1,5			5	0,090	
---	0634.801.062	SEALING RING	1		00.00.0000		18X24			5	0,001	

VKF Incidence factor

OTK Optional technical kit

ID Identification (output code)

SP Supplier plant



Parts list  
Page 1 from 1

Material number: 1308.050.186      9 S 75 /  
Plant: 064.47.01-1  
Material-assembly-group-no: 1308.135.011



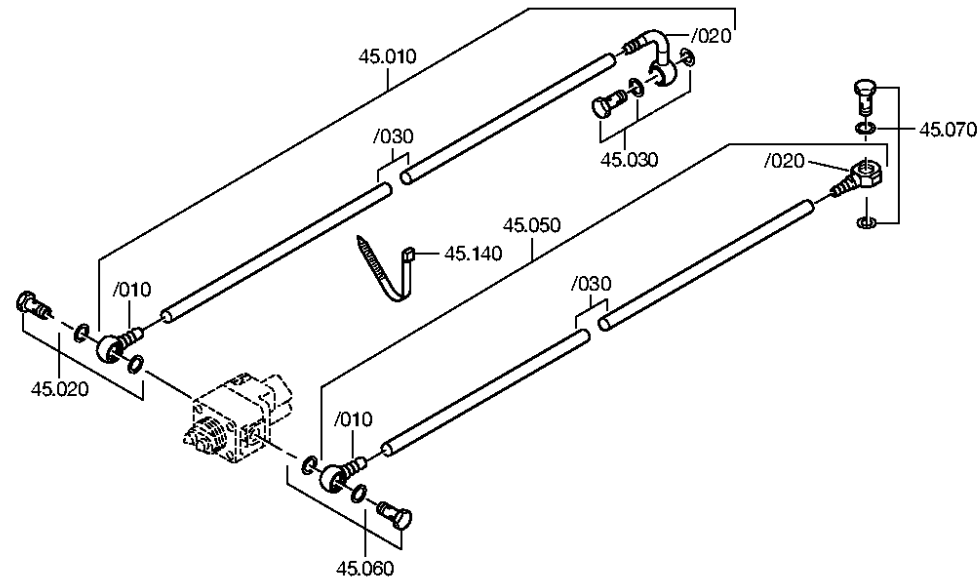
Pos.	Material number	Name	VKF	Amend. no.	Amend. start	Prod. no.	Material feature / tech. info.	OTK	External material no.	ID	Weight	SP
10	1308.301.120	COVER	1		00.00.0000					5	0,000	
20	0634.313.424	O-RING	1		00.00.0000		I34X3			5	0,000	
50	---	HEXAGON BOLT	3		00.00.0000		M10X35 DIN933ALT/8.8 A3C			3	0,000	
---	0636.015.227	HEXAGON BOLT	3		00.00.0000		M10X35			5	30	
---	0630.302.091	SPRING WASHER	3		00.00.0000					5	0,002	
60	0750.111.334	SHAFT SEAL	1		00.00.0000		WTB 80X100X10			3	0,000	
110	---	SCREW PLUG	1		00.00.0000		M30X1,5 *100N.M* DICHRING			3	0,000	
---	0636.302.066	SCREW PLUG	1		00.00.0000		M30X1,5			5	0,088	
---	0634.801.324	SEALING RING	1		00.00.0000		30X36			5	0,000	
140	0730.162.694	BUSH	1		00.00.0000		A=25,00			5	0,000	
150	1308.308.008	COUNTING DISC	1		00.00.0000					5	0,000	
160	---	PULSE SENSOR	1		00.00.0000		L= 19,8* 45N.M*O. DICHRING*BAJONETT			3	0,000	
---	0501.210.855	PULSE SENSOR	1		00.00.0000		KPL. IN 0501 210 854(3)			5	0,090	

VKF Incidence factor

OTK Optional technical kit

ID Identification (output code)

SP Supplier plant





Pos.	Material number	Name	VKF	Amend. no.	Amend. start	Prod. no.	Material feature / tech. info.	OTK	External material no.	ID	Weight	SP
10	6007.202.191	PIPE	1		00.00.0000		KPL.370,00MM			3	0,000	
/10	6038.310.009	RING PIECE	1		00.00.0000					5	0,000	
/20	1315.245.033	RING PIECE	1	C0100068 8E10	00.00.0000	00.00.0000	KPL.			3	0,000	
/30	0632.707.004	PIPE	370	C0100068 8E10	00.00.0000	00.00.0000	9X1,5			5	0,000	
20	---	UNION SCREW	1	C0100394 6B10	00.00.0000	00.00.0000	M14X26*MIT DICHRING			3	0,000	
---	0737.835.238	UNION SCREW	1		00.00.0000					5	0,000	
---	0730.008.057	SEALING RING	1		00.00.0000		A=1,50 IN 0730 008 054(2)			5	0,000	
30	---	UNION SCREW	1	C0100394 3B10	00.00.0000	00.00.0000	8 DIN7643			3	0,000	
---	0637.835.026	UNION SCREW	1		00.00.0000					5	22	
---	0730.008.056	SEALING RING	1		00.00.0000		A12X17			5	0,000	
50	6007.202.192	PIPE	1		00.00.0000		KPL.450,00MM			3	0,000	
/10	6038.310.009	RING PIECE	1		00.00.0000					5	0,000	
/20	0637.834.322	RING PIECE	1	C0100142 6A10	00.00.0000	00.00.0000				5	0,000	
/30	0632.707.004	PIPE	450	C0100068 9E10	00.00.0000	00.00.0000	9X1,5			5	0,000	
60	---	UNION SCREW	1	C0100394 6B10	00.00.0000	00.00.0000	M14X26*MIT DICHRING			3	0,000	
---	0737.835.238	UNION SCREW	1		00.00.0000					5	0,000	
---	0730.008.057	SEALING RING	1		00.00.0000		A=1,50 IN 0730 008 054(2)			5	0,000	
70	---	UNION SCREW	1	C0100394 3B10	00.00.0000	00.00.0000	8 DIN7643			3	0,000	
---	0637.835.026	UNION SCREW	1		00.00.0000					5	22	
---	0730.008.056	SEALING RING	1		00.00.0000		A12X17			5	0,000	
140	0659.160.068	CABLE CLIP	2		00.00.0000					5	0,000	

VKF Incidence factor

OTK Optional technical kit

ID Identification (output code)

SP Supplier plant